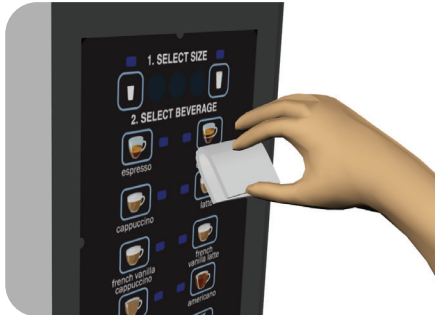


Follow the instructions to install anti-microbial film on areas that are exposed to high contact.

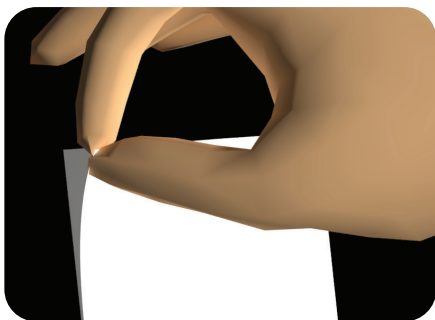
Note: If technical assistance is needed, please call 1-800-286-6345



1. Clean the surface where the film will be applied. Make sure the surface is clean and dry before applying film.



2. If applicable, measure and cut the film to cover the area of application.



3. Carefully peel the white backing from one edge of the film.



4. Peel the backing enough to expose both top edges of the film.



5. Place the adhesive side of the film on the area of application. Peel the backing off the film as you press the film against the surface.



6. Continue to peel the backing while pressing the film against the surface until the backing is off. Film installation is complete.

Note: Do not peel the film off the surface to try and reposition, otherwise you may see some cloudiness in the film.

BUNN-O-MATIC CORPORATION

POST OFFICE BOX 3227

SPRINGFIELD, ILLINOIS 62708-3227

PHONE: (217) 529-6601 FAX: (217) 529-6644