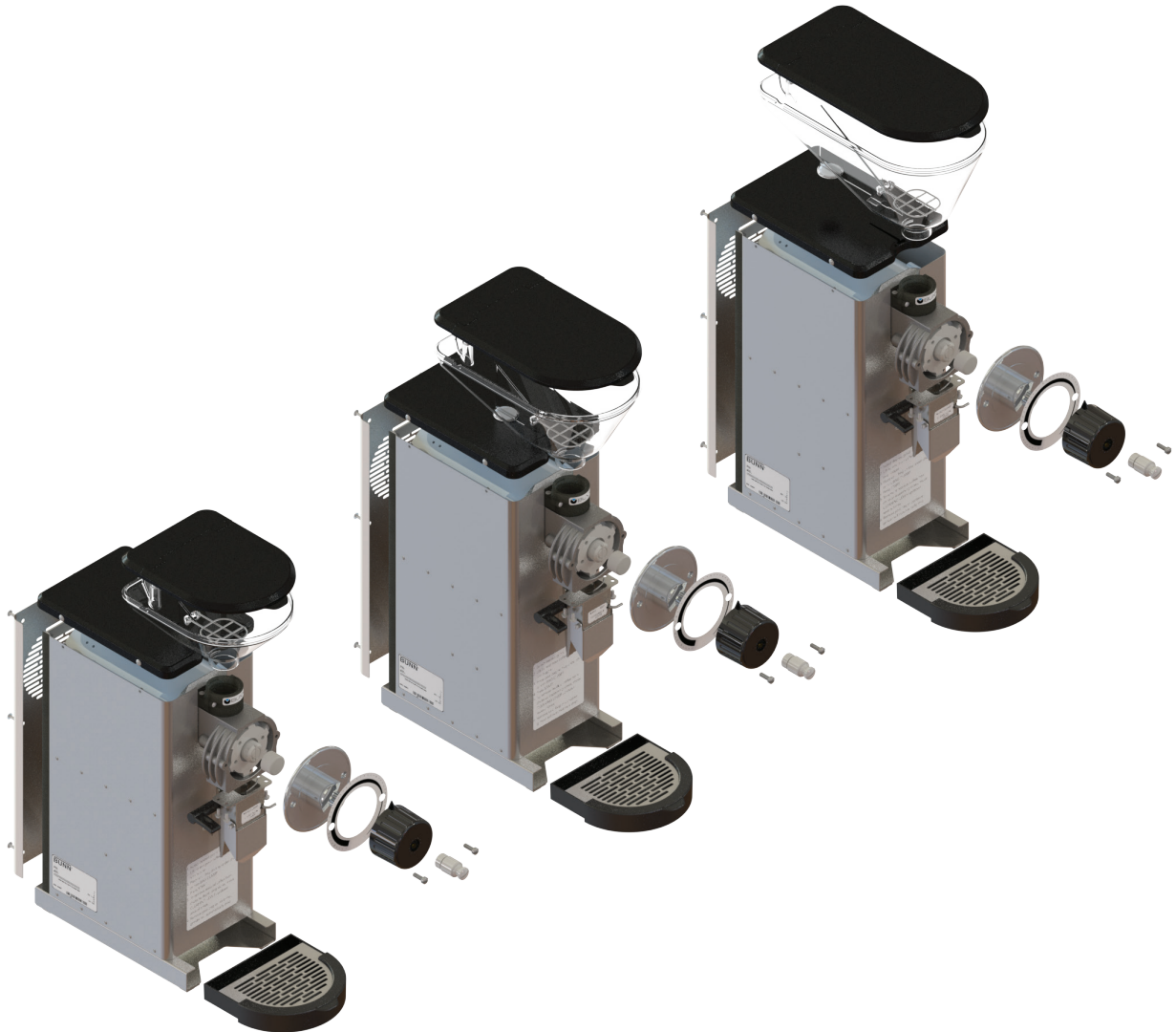


GVH Precision Grinders

G Series Visual Hopper Grinders

GVH-1, GVH-2, GVH-3, GVH trifacta®



ILLUSTRATED PARTS CATALOG

Designs, materials, weights, specifications, and dimensions for equipment or replacement parts are subject to change without notice.

Bunn-O-Matic Corporation

Post Office Box 3227, Springfield, Illinois 62708-3227

Phone (217) 529-6601 | Fax (217) 529-6644

BUNN-O-MATIC COMMERCIAL PRODUCT WARRANTY

Warranty statements and information can be found on our website. Please visit <https://commercial.bunn.com/support/warranty-lookup> for further details.

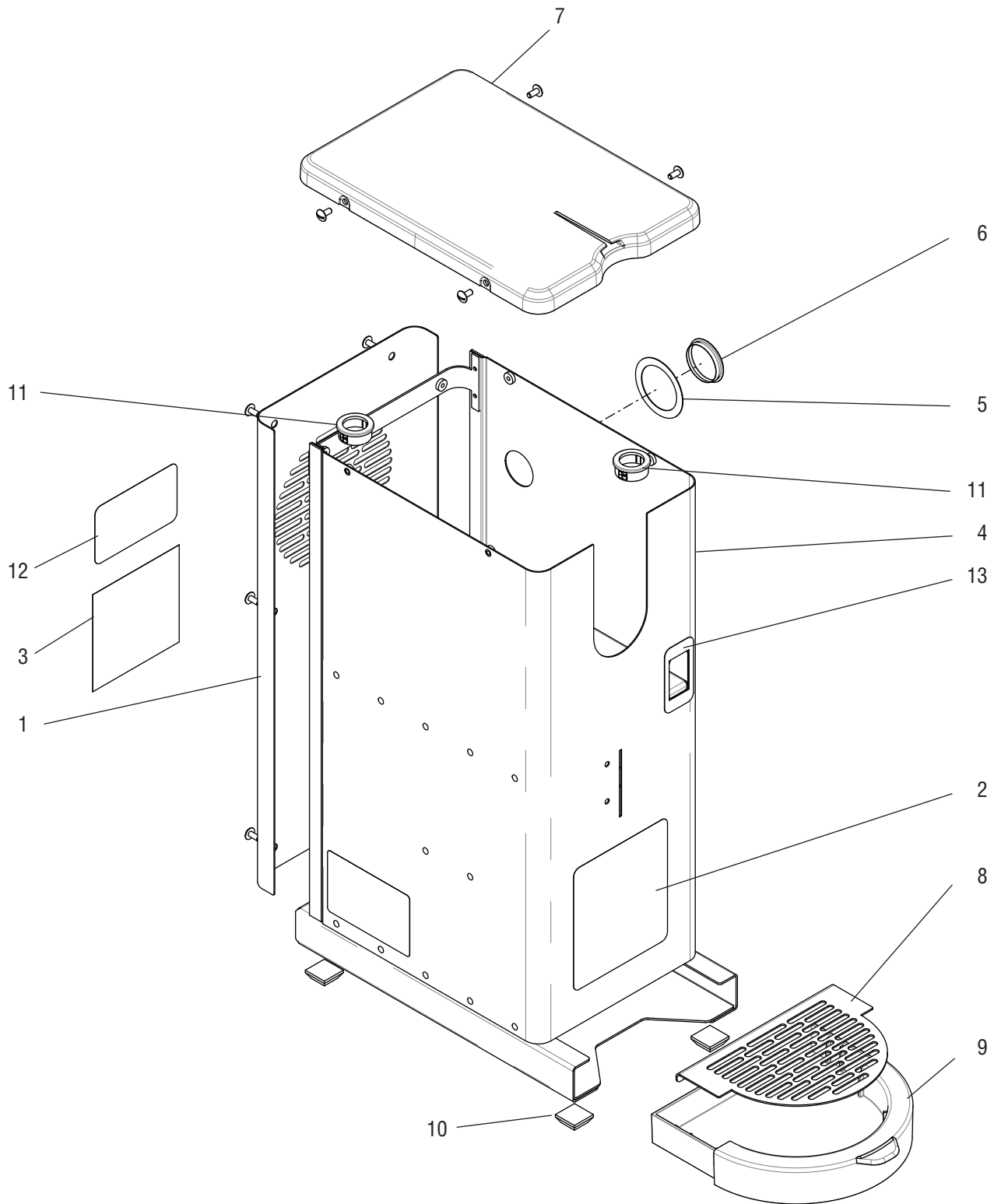
TABLE OF CONTENTS

Housing and Panels	4
Hoppers and Lids	6
Motor, Burr Housing and Chutes	8
Electrical and Operating Controls 120V	12
Electrical and Operating Controls 230V	14
Numerical Index.....	16



HOUSING AND PANELS

GVH-1,2,3 &
GVH trifecta®



HOUSING AND PANELS

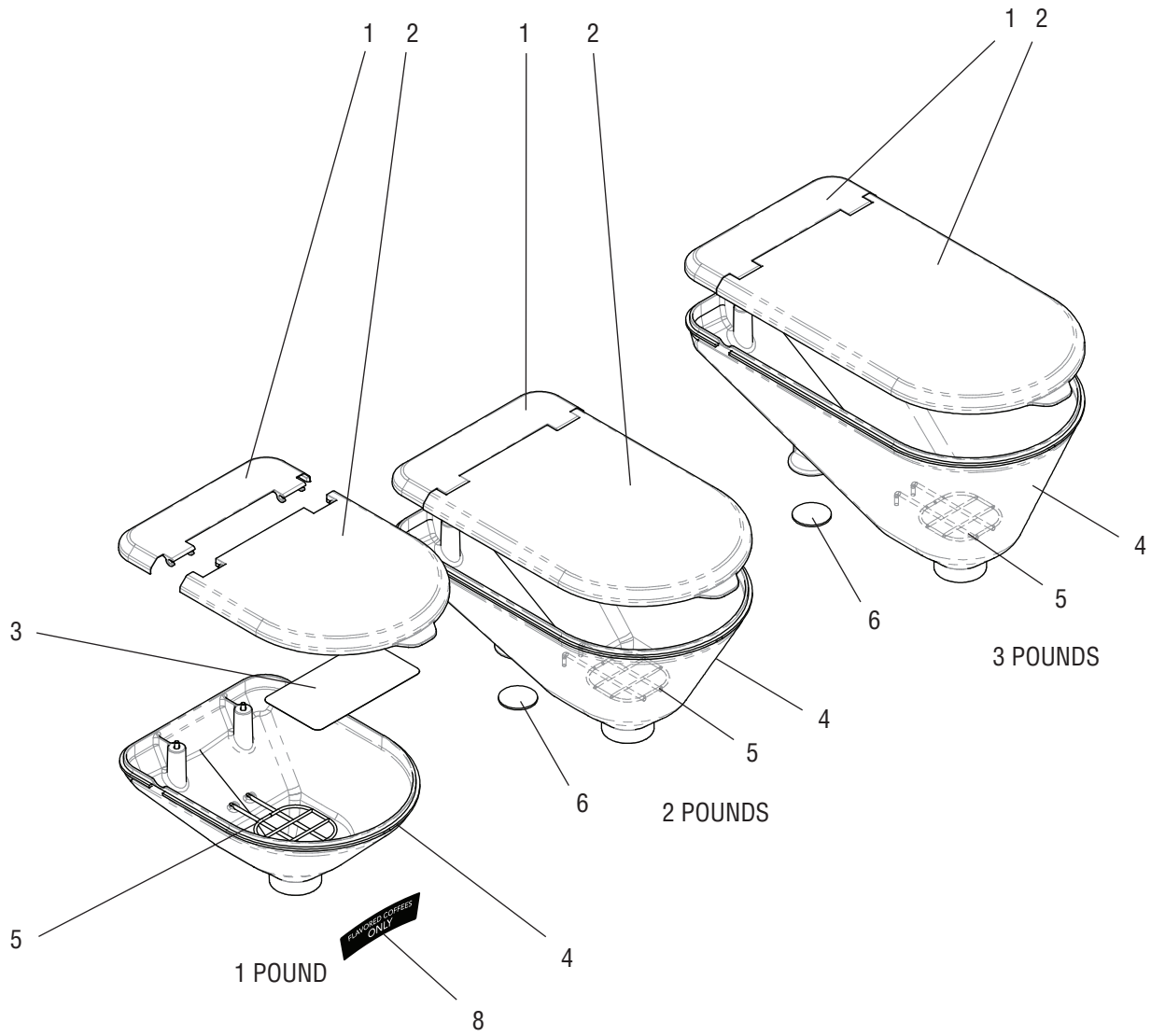
ITEM	PART NO.	QTY.	DESCRIPTION
1	53934.1000	1	Panel W/Decals, Rear SST 120V (Includes items 3 & 12) (Shown)
	53934.1001	1	Panel W/Decals, Rear SST 230V (Includes items 3 & 12)
	01315.0000	6	Screw, Truss Head #8-32 x .375"
2	55074.0000	1	Decal, Grind Instructions
3	20545.0000	1	Decal, Warning - Electrical
4	53949.1000	1	Housing, SST (Includes items 5, 10 & 13)
5	05884.0000	1	Decal, Motor Reset
6	02999.0000	1	Plug, Hole - SST 1.19 Dia
7	53933.0000	1	Cover, Top
	01317.0005	4	Screw, Truss Head BLK #8-32 x .375"
8	53939.0000	1	Cover, Grounds Tray
9	53938.0000	1	Tray, Grounds
10	02547.0000	4	Foot, Rubber
11	01592.0000	2	Bushing, Snap 1.0" Dia
12	37881.0000	1	Decal, No Serviceable Parts
13	55072.0000	1	Decal, ON/OFF/STOP

* Indicates the part number listed is for reference only. See DESCRIPTION for possible service replacement.



HOPPERS AND LIDS

GVH-1,2,3 &
GVH trifacta®



HOPPERS AND LIDS

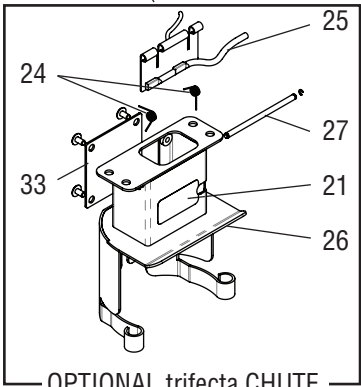
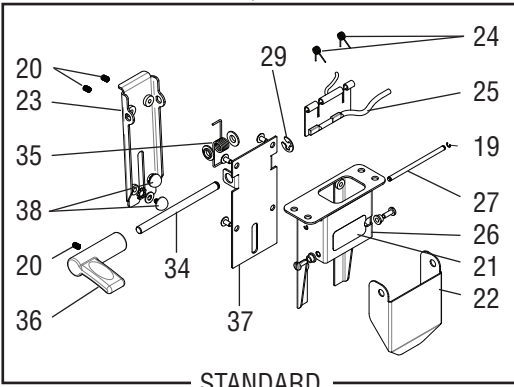
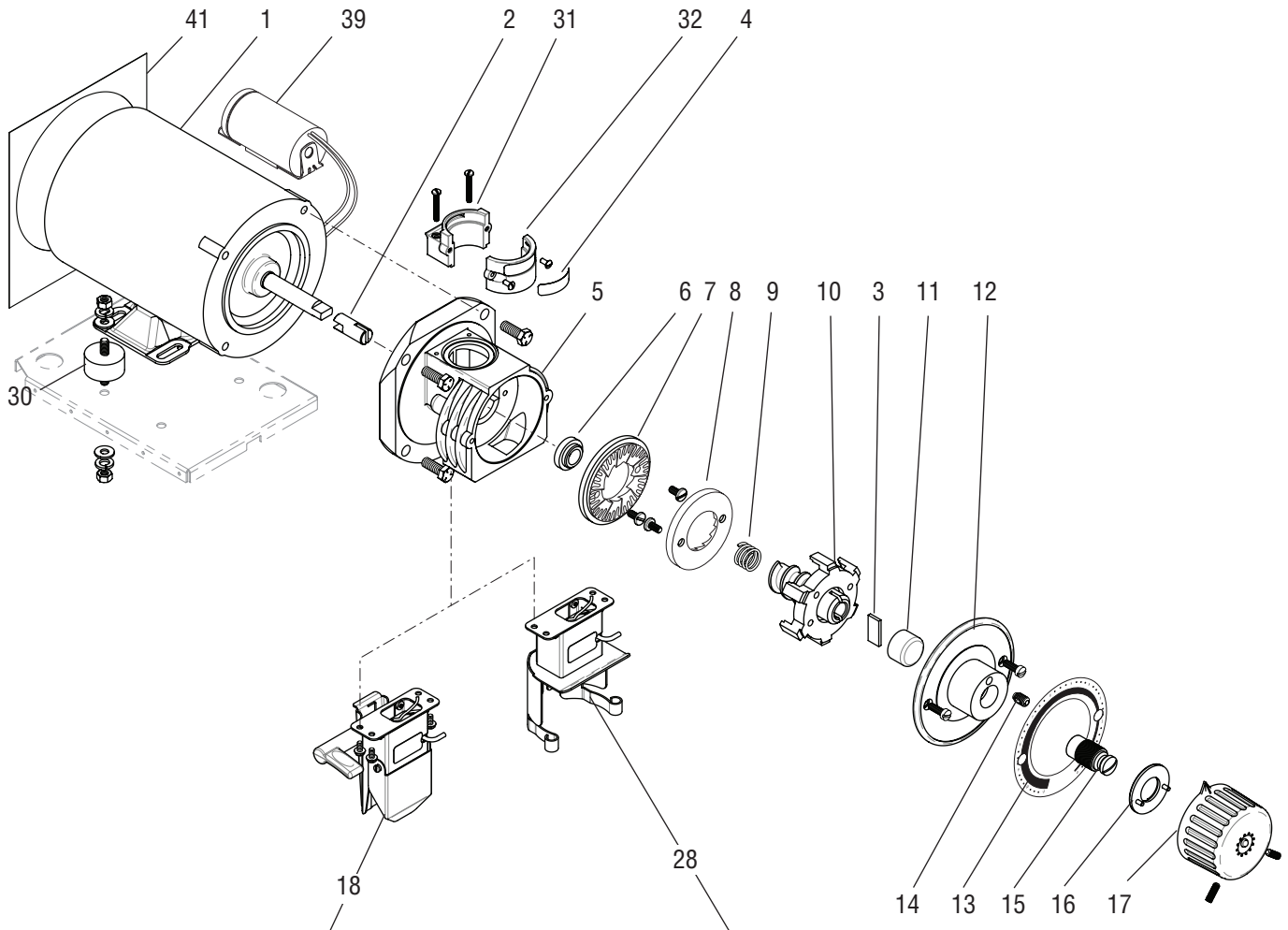
ITEM	PART NO.	QTY.	DESCRIPTION
1	54338.0001	1	Lid, Rear - BLK (All models)
	02328.0004	2	Screw, Truss Head - BLK #6-32 x .312"
2	54331.1000	1	Kit, Front Hopper Lid - BLK (1 Pound)
	54334.1000	1	Kit, Front Hopper Lid - BLK (2 Pounds)
	54337.1000	1	Kit, Front Hopper Lid - BLK (3 Pounds)
			(Includes # 3)
3	11076.0001	1	Decal, Warning - Close Lid (All models)
4	54330.0000	1	Hopper (1 Pound)
	54333.0000	1	Hopper (2 Pounds)
	54336.0000	1	Hopper (3 Pounds)
5	54357.1000	1	Guard (Includes washers & nuts) (All models)
	44742.0000	2	Flat Washers
	00991.0004	2	Lock Nut
6	03996.0000	1	Pad, Anti Skid (Not used on 1 pound hopper)
7	54329.1000	1	GVH Hopper Assy (1 Pound, Includes Item 1, 2, 3, 4, 5 & 6)
	54332.1000	1	GVH Hopper Assy (2 Pounds, Includes Item 1, 2, 3, 4, 5 & 6)
	54335.1000	1	GVH Hopper Assy (3 Pounds, Includes Item 1, 2, 3, 4, 5 & 6)
8	55405.0000	1	Decal, Flavord Coffee Only (Optional)

* Indicates the part number listed is for reference only. See DESCRIPTION for possible service replacement.



MOTOR, BURR HOUSING AND CHUTES

GVH-1,2,3 &
GVH trifecta®



MOTOR, BURR HOUSING AND CHUTES

ITEM	PART NO.	QTY.	DESCRIPTION
1	11029.1005	1	Motor Assy, 115V 60HZ (Includes item 6 & instructions)
	11029.1007	1	Motor Assy, 230V 50/60HZ (Includes item 6 & instructions)
2	11191.0001	1	Extension, Motor Shaft
3	05852.0001	1	Plate, Shear
4		1	Decal, Bunn Logo (Order # 42)
5	11180.0001	1	Housing, Burr
	02313.0000	4	Screw, Hex Head W/Washer .375"-16 x 1.0"
6	05870.0000	1	Bushing
7	-----	1	Burr (Not available. Order item 40)
	02314.0000	2	Screw, Pan Head .25"-20 x .50"
8	-----	1	Burr (Not available. Order item 40)
	02314.0000	2	Screw, Pan Head .25"-20 x .50"
9	11192.0000	1	Spring
10	11185.0001	1	Burr Auger Rotor/Spring Assy (Includes item 9)
11	00622.0000	1	Cup, Burr Rotor
12	53945.1000	1	Plate, Grind Selector Dial (Includes # 14)
	11064.0000	2	Screw, Fillister Head .250"-20 x .75"
13	55071.0000	1	Decal, Grind Select
	55071.0001	1	Decal, Grind Select (Symbols)
	55071.0002	1	Decal, Grind Select (Turkish)
14	11086.0000	1	Dentent, Spring Plunger
15	54339.0000	1	Adjusting Screw W/Bearing
16	53946.0000	1	Plate, Dentent
17	22294.1001	1	Knob, Grind Selector (Includes item 16 and set screws)
	21611.0000	2	Set Screw .25020 x 0.75"
18	54346.1000	1	Chute/Dechaffer Assy (Std)
19	11177.0000	2	Ring, Retaining
20	48897.0000	3	Set Screw
21	55073.0000	1	Decal, Chute
22	54340.0000	1	Cover, Chute
	02328.0000	2	Screw, Pan Head 6-32 x .375"
	21438.0001	2	Shoulder Washer
23	54355.0000	1	Rocker Weldment
24	20204.1100	2	Spring

(Continued)

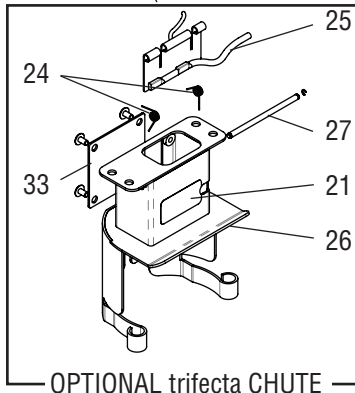
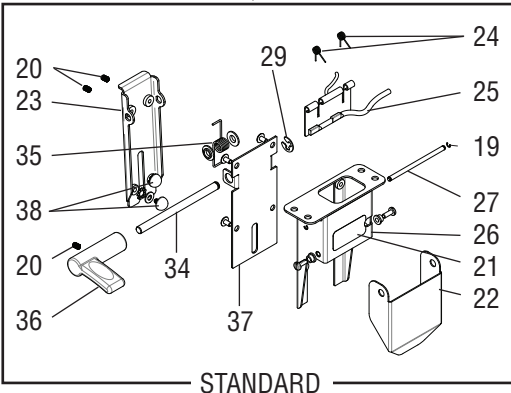
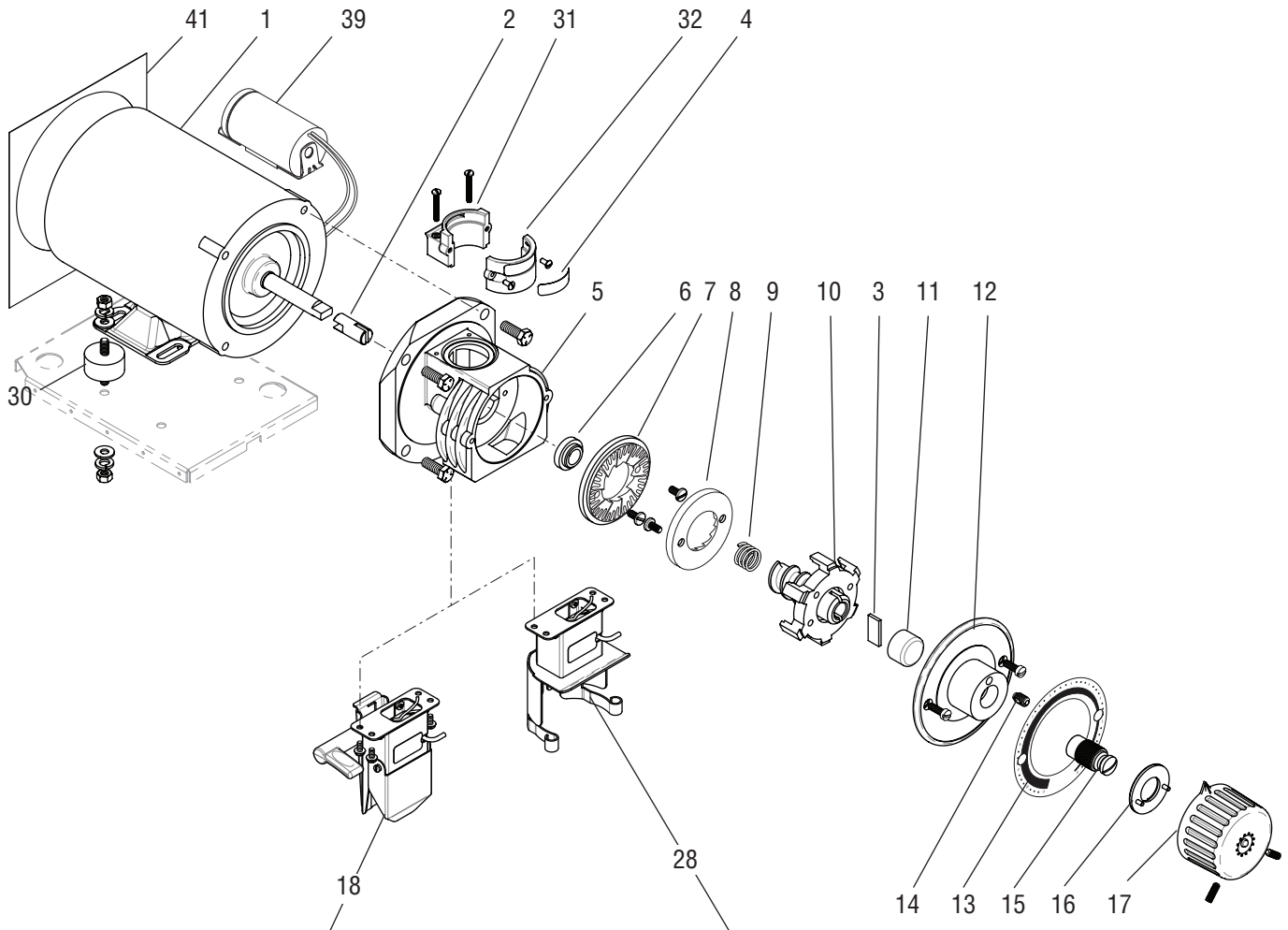
* Indicates the part number listed is for reference only. See DESCRIPTION for possible service replacement.



MOTOR, BURR HOUSING AND CHUTES

GVH-1,2,3 &
GVH trifecta®

(Continued)



MOTOR, BURR HOUSING AND CHUTES

ITEM	PART NO.	QTY.	DESCRIPTION
25	20204.1200	1	Dechaffer
26	54347.0000	1	Chute Weldment (Standard)
	55027.0000	1	Chute Weldment (trifecta)
	02330.0001	4	Screw, Slotted Hex Head #10-24 x .375"
27	11176.0004	1	Pin, Pivot-Lower 2.44" long
28	55032.0000	1	Chute/Dechaffer Assy (trifecta®)
29	42814.0000	1	E-Ring
30	55363.0000	4	Isolation Mount
	34529.0000	8	Flat Washer, .735" Dia
	42537.0000	8	Lock Washer, .375" SST
	55398.0000	8	Nut, 5/16-18
31		1	Inner Collar (Order # 42)
	55666.0000	2	Screw, Pan Head 8-32 x 1.25"
32		1	Outer Collar (Order # 42)
	01382.0000	2	Screw, TRH 6-32 x .375"
33	55031.0000	1	Plate, Rear
	01308.0002	4	Screw TRH 6-32 x .25"
34	54353.0000	1	Shaft
35	47449.0000	1	Spring
	34362.0005	2	Bushing
36	54359.1001	1	Handle (Includes # 20)
37	54352.0000	1	Plate
	01308.0002	4	Screw TRH 6-32 x .25"
38	40602.0001	2	Bumper
	01512.0000	2	Lock Washer
	01501.0000	2	Flat Washer
39	35906.1001	1	Start Capacitor (120V & 230V)
	33052.0000	2	Screw, FLHD SLTD SST 10-32x.5"
40	05861.1002	1	Burr Kit (Includes items 7, 8 and mounting screws)
	11285.1000	1	Burr Kit, Turkish Grind (Includes items 7, 8 and mounting screws)
41	55769.0000	1	Baffle (120V Only)

The following items are not illustrated

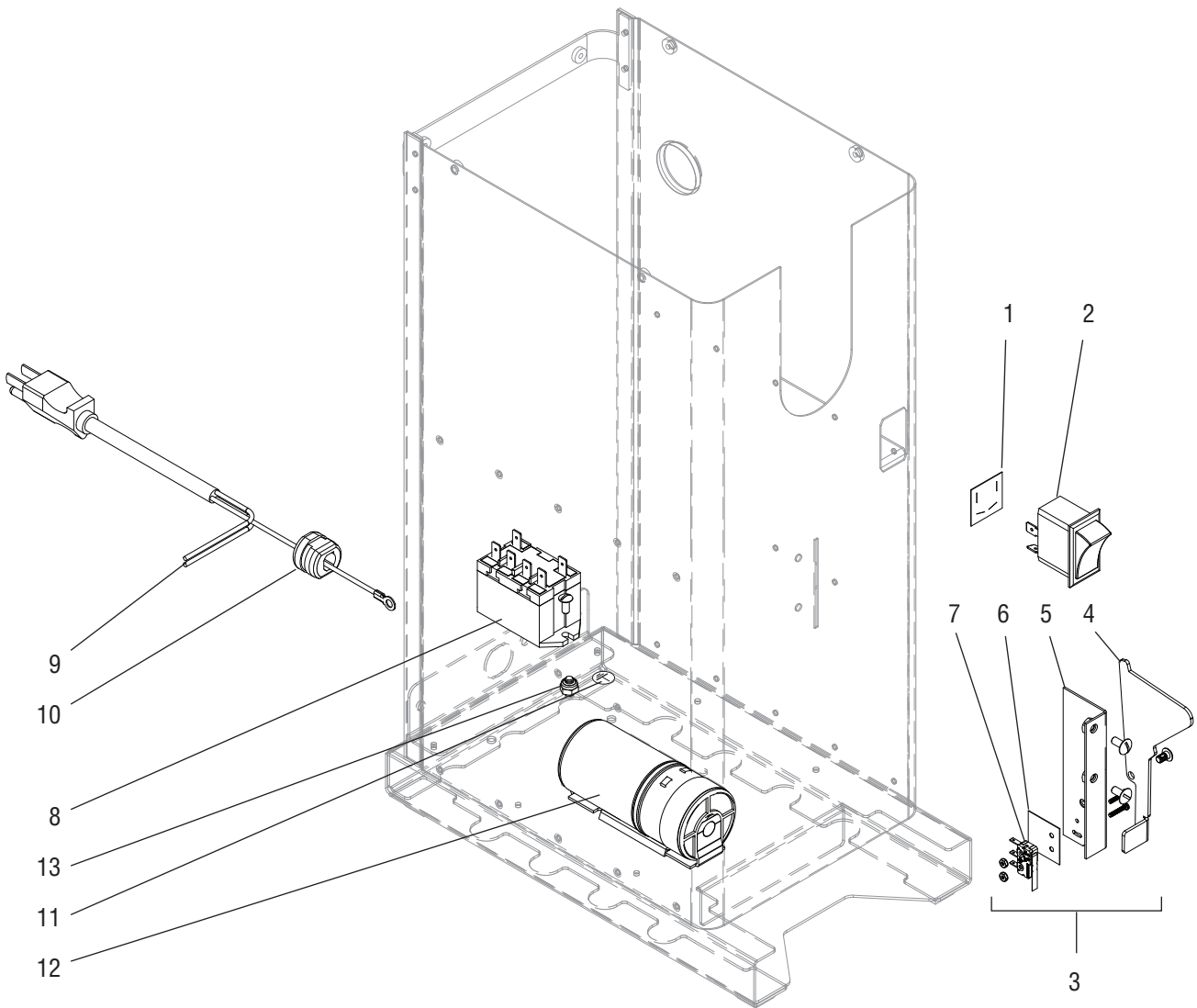
42	55754.1000	1	Kit, Hopper Collar (Includes # 4, 31, 32, & screws)
----	------------	---	---

* Indicates the part number listed is for reference only. See DESCRIPTION for possible service replacement.



ELECTRICAL AND OPERATING CONTROLS 120V

GVH-1,2,3 &
GVH trifacta®



ELECTRICAL AND OPERATING CONTROLS 120V

ITEM	PART NO.	QTY.	DESCRIPTION
1	11110.0001	1	Shield, Switch Insulator
2	05815.0001	1	Switch, OFF/ON/START
3	55403.1000	1	Bag Sensor Assy (Includes items 4 thru 7)
	01315.0000	2	Screw, Truss Head #8-32 x .375"
	00970.0000	2	Nut, Keps #8-32
4	53950.0000	1	Pivot Arm, Bag Sensor (Not Available. Order item 3)
	02357.0001	1	Screw, Truss Head - Shoulder #6-32
5	20204.2001	1	Bracket, Pivot Arm
6	11077.0001	1	Insulator, Bag Sensor Switch
7	11087.0001	1	Switch, Bag Sensor
	02356.0000	2	Screw, Pan Head #2-56 x .50"
	01506.0000	2	Lockwasher, External Tooth #2
	00998.0000	2	Nut, Hex #2-56
8	37711.0000	1	Relay, 120V AC
	01382.0000	2	Screw, Truss Head - SST #6-32 x .375"
9	40701.0013	1	Cord, Power - 120V
10	01686.0000	1	Bushing, Strain Relief (120V Models)
11	00824.0002	1	Decal, Ground
12	35906.1001	1	Start Capacitor 120V & 230V
	33052.0000	2	Screw, FLH SLTD SST 10-32x.50"
13	00991.0003	1	Lock Nut

The following items are not illustrated

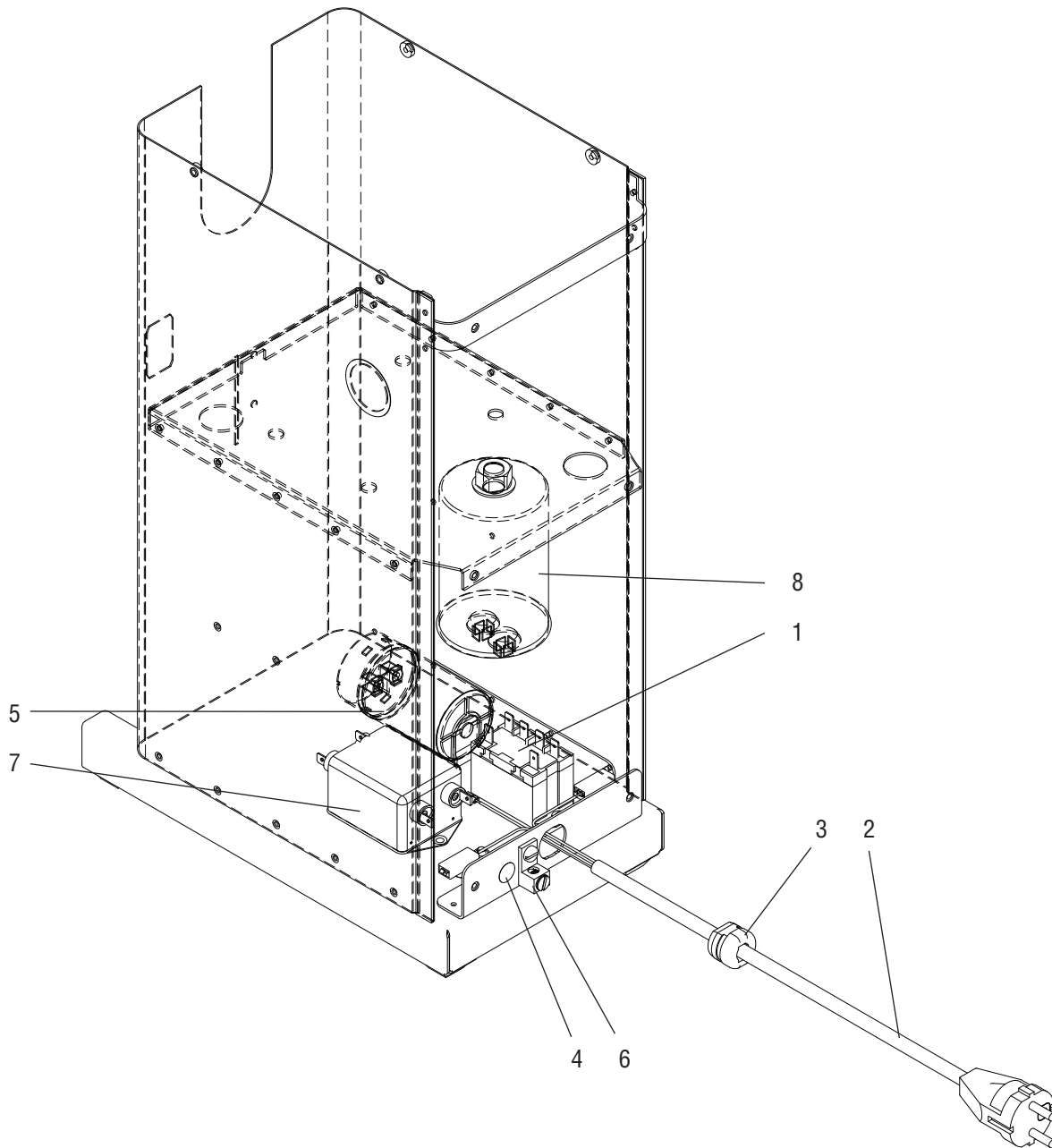
14	11187.0001	1	Wiring Harness, Main 120V, 230V & 240V AC
----	------------	---	---

* Indicates the part number listed is for reference only. See DESCRIPTION for possible service replacement.



ELECTRICAL AND OPERATING CONTROLS 230V

GVH-1,2,3 &
GVH trifecta®



ELECTRICAL AND OPERATING CONTROLS 230V

ITEM	PART NO.	QTY.	DESCRIPTION
1	37711.0001	1	Relay, 230V AC
	01382.0000	2	Screw, Truss Head - SST #6-32 x .375"
2	33529.0006	1	Cord, Power - 230V
3	01686.0000	1	Bushing, Strain Relief
4	00824.0001	1	Decal, Equipotentiality
5	35906.1001	1	Start Capacitor
	33052.0000	2	Screw, FLH SLTD SST 10-32x.50"
6	27705.0000	1	Terminal Lug
	01327.0000	1	Screw SLTD SST 10-32x.375"
	01502.0000	1	Lock Washer
7	29446.0006	1	Capacitor, EMI Filter 10A (250V)
	58450.0000	1	Resistor Assy 20.0K Ohm (Not illustrated, placed on the line side of EMI Filter)
	01382.0000	2	Screw, Truss Head - SST #6-32 x .375"
8	35906.0003	1	Run Capacitor
	24050.0400	1	Nut, Mounting M12 x 1.75

The following items are not illustrated

9	21003.0183	1	Lead, Red (Start Cap to Run Cap)
---	------------	---	----------------------------------

* Indicates the part number listed is for reference only. See DESCRIPTION for possible service replacement.

NUMERICAL INDEX

PART NO.	PAGE NO.	PART NO.	PAGE NO.	PART NO.	PAGE NO.	PART NO.	PAGE NO.
00622.0000.....	9	21003.0183.....	15	55071.0000.....	9		
00656.0001.....	5	21438.0001.....	9	55071.0001.....	9		
00824.0001.....	15	21611.0000.....	9	55071.0002.....	9		
00824.0002.....	13	22294.1001.....	9	55072.0000.....	5		
00970.0000.....	13	24050.0400.....	15	55073.0000.....	9		
00991.0003.....	13	27705.0000.....	15	55074.0000.....	5		
00991.0004.....	7	33052.0000.....	11,13,15	55363.0000.....	11		
00998.0000.....	13	33529.0006.....	15	55398.0000.....	11		
01308.0002.....	11	34362.0005.....	11	55403.1000.....	13		
01315.0000.....	5,13	34529.0000.....	11	55405.0000.....	7		
01317.0005.....	5	35906.0003.....	15	55666.0000.....	11		
01327.0000.....	15	35906.1001.....	11,13,15	55754.1000.....	11		
01382.0000.....	11,13,15	29446.0006.....	15	55769.0000.....	11		
01501.0000.....	11	37711.0000.....	13				
01502.0000.....	15	37711.0001.....	15				
01506.0000.....	13	37881.0000.....	5				
01512.0000.....	11	40602.0001.....	11				
01592.0000.....	5	40701.0013.....	13				
01686.0000.....	13,15	42537.0000.....	11				
02313.0000.....	9	42814.0000.....	11				
02314.0000.....	9	44742.0000.....	7				
02328.0000.....	9	47449.0000.....	11				
02328.0004.....	7	48897.0000.....	9				
02330.0001.....	11	53933.0000.....	5				
02356.0000.....	13	53934.1000.....	5				
02357.0001.....	13	53934.1001.....	5				
02547.0000.....	5	53938.0000.....	5				
02999.0000.....	5	53939.0000.....	5				
03996.0000.....	7	53945.1000.....	9				
05815.0001.....	13	53946.1000.....	9				
05852.0001.....	9	53949.1000.....	5				
05861.1002.....	11	53950.0000.....	13				
05870.0000.....	9	54329.0000.....	7				
05884.0000.....	5	54330.0000.....	7				
11029.1005.....	9	54331.1000.....	7				
11029.1007.....	9	54332.0000.....	7				
11064.0000.....	9	54333.0000.....	7				
11076.0000.....	7	54334.1000.....	7				
11077.0001.....	13	54335.0000.....	7				
11086.0000.....	9	54336.0000.....	7				
11087.0001.....	13	54337.1000.....	7				
11110.0001.....	13	54338.0001.....	7				
11176.0004.....	11	54339.0000.....	9				
11177.0000.....	9	54340.0000.....	9				
11180.0001.....	9	54346.0000.....	9				
11185.0001.....	9	54347.0000.....	11				
11187.0001.....	13	54352.0000.....	11				
11191.0001.....	9	54353.0000.....	11				
11192.0000.....	9	54355.0000.....	9				
11285.1000.....	11	54357.1000.....	7				
20204.1100.....	9	54359.1001.....	11				
20204.1200.....	11	55027.0000.....	11				
20204.2001.....	13	55031.0000.....	11				
20545.0000.....	5	55032.0000.....	11				