



Care & Cleaning Instructions

LOADING

Frozen Concentrates

NOTE: Loading frozen concentrate in the product cabinet may cause damage to the machine. This damage is not covered by warranty.

1. Thoroughly mix the thawed concentrate by vigorously shaking the product container.
2. Open the dispenser door.
3. Prior to placing the product container in the dispenser, make sure that the o-ring on the container adapter is lubricated. This will ease removal of the container when it becomes necessary.
4. Place the product container in the desired position and press it firmly into the bottle adapter opening.
5. Open the vent hole in the product container. (If required)

Note: Concentrate in the container must be completely thawed and be within the temperature range of 35-40 degrees F (1.6-4.4 degrees C.) Product outside of this temperature range, especially below, may produce an “out of ratio” drink.

Ambient Concentrates (Optional)

1. Install an Ambient Concentrate Conversion Kit (BUNN-O-MATIC part number 33699.0002) per the instructions provided in the kit.
2. Attach the concentrate product hose to the appropriate concentrate line located at the rear of the dispenser.
3. Attach the other end of the product hose to the product container through an appropriate fitting.

NOTE: Although the dispenser is designed to accept ambient concentrates, the Nitro Coffee cascade performance may be reduced due to ambient product mixing with the cold nitrogenated water.

PRIMING

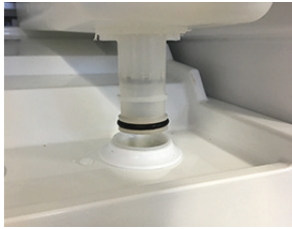
1. Open the dispenser door
 2. Load concentrate per instructions in section titled *Loading*.
 3. Close the dispenser door.
 4. Place a large container under the appropriate dispense nozzle.
- Pull and hold the tap handle, until concentrate dispenses from the dispense nozzle.

Note: This may take several seconds, depending on the installation and set pump speed.

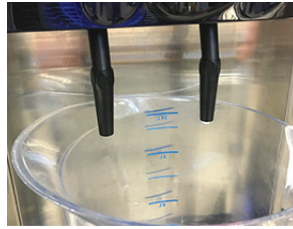
(Continued)

Recommended Daily Cleaning Instructions

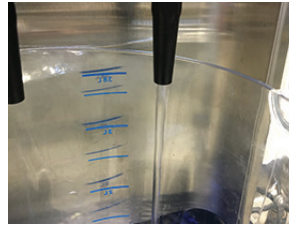
The use of a damp cloth rinsed in any mild, non-abrasive, liquid detergent is recommended for cleaning all surfaces on Bunn-O-Matic equipment. Do **NOT** clean this equipment with a water jet device.



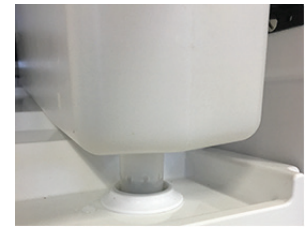
1. Open dispenser door. Lift up on product containers to disconnect them from the machine inlet.



2. Close door, place an empty container under the dispense nozzles.



3. Dispense from each station until clear water flows from the dispense nozzle.



4. Open dispenser door and reconnect all product containers.



5. Remove dispenser nozzles and drip tray. Wash all parts in warm soapy water.



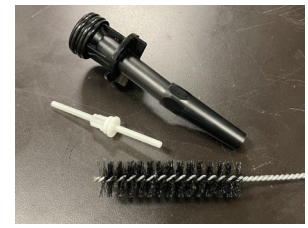
Brush Storage



Lubricant Shelf



6. Use brush to clean through dispense nozzles.



7. Use brush to clean nitro insert.



8. Use brush to clean nozzle connection ports on machine. BUNN Part No. 49827.0000.



9. Apply small amount of food grade lubricant to o-ring on nozzles. BUNN Part No. M2550.0001.



10. With a warm soapy cloth, wipe down interior of cabinet and splash panel area behind dispensing nozzles.



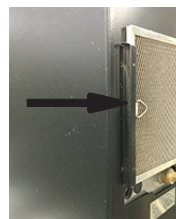
11. Replace drip tray and dispense nozzles. Be sure to install nitro nozzle in left dispense station.



12. Dispense from each station until finished product flows from the dispense nozzles.

Recommended Weekly Cleaning

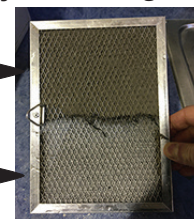
REAR OF DISPENSER



13. Remove Air Filter from outside rear panel of dispenser.

DIRTY

CLEAN



14. Wash Filter using warm soapy water, rinse using water flow from faucet. Shake out excess water then re-install on rear panel of dispenser.