



## USE & CARE INSTRUCTIONS for ThermoFresh® SERVER with MECHANICAL SIGHT GAUGE

### BEVERAGE DISPENSING



STEP 1

The server must be placed on a sturdy counter or shelf.



STEP 2

Place a cup or container in center of serving platform as indicated.



STEP 3

Open the faucet handle until the desired quantity is dispensed.

### DAILY CLEANING



STEP 1

Run a complete brew cycle of *hot water* into the server and let it set for a minute. Empty the server completely by opening the faucet.



STEP 2

Flip the lid, fill server with cleaning solution and thoroughly clean the inside of server.



STEP 3

Rinse server thoroughly using fresh water rinse.



STEP 4

Fully fill server with sanitizing solution for 5 minutes then drain through fully open faucet.

**NOTE:** Bunn-O-Matic recommends the three step method for cleaning and sanitizing the server. The 3 step method consists of hot soapy water using an mild, non-citrus detergent, a fresh water rinse and an aqueous sanitizing solution using a non-chlorine sanitizer. Do not submerge the server. Failure to follow the recommended cleaning procedures can cause corrosion to the stainless steel surface and damage the vacuum seal. **USE OF ANY CHLORINATED PRODUCT VOIDS THE FACTORY WARRANTY.**

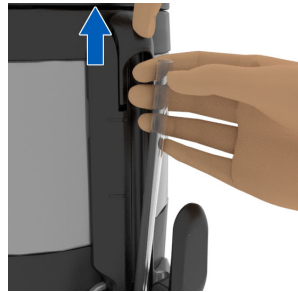
**Do not submerge server.**

**DAILY CLEANING (Continued)**



STEP 5

Remove the faucet handle/stem assembly by unscrewing the faucet nut.



STEP 6

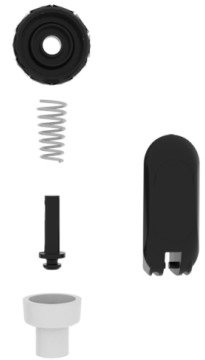
Push sight gauge cap up and pull tube from the shroud. Remove the grommet from the tube and clean thoroughly.



STEP 7

Wash the entire outside surface of the lid assembly with a mild detergent, water solution, and a soft, non-abrasive cloth and rinse with hot water.

**Do not submerge.**



STEP 8

Disassemble the faucet/stem assembly. Thoroughly wash all faucet parts, drip tray and cover in a mild detergent and water solution. Rinse the parts in hot water. Sanitize the parts for five minutes, then air dry completely.



STEP 9

Remove the drip tray and drip tray cover. Thoroughly wash in a mild detergent and water solution. Rinse the parts in hot water.



STEP 10

Reassemble the faucet and attach it to the dispenser.

**CAUTION:** When reassembling, DO NOT over-tighten faucet bonnet. Hand tighten only.



STEP 11

Wash the entire outside surface of the server with a soft, non-abrasive cloth. Do NOT clean with a water jet device.