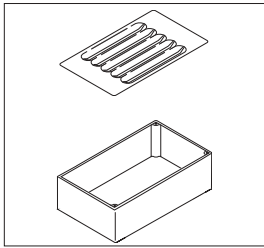


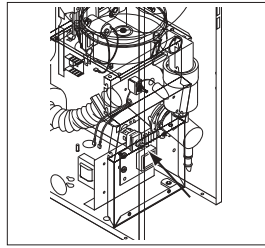
## CLEANING INSTRUCTIONS for FMD-1 POWDER MIX DISPENSER

**NOTICE** - This guide is for quick reference only and is not intended to replace the information in the Operation Manual!

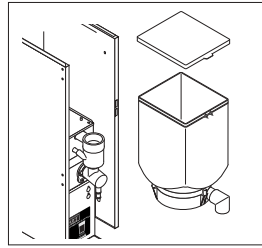
### RECOMMENDED DAILY CLEANING



1. Empty the Drip Tray and wash components in a mild solution of dish detergent using a bristle brush. Rinse and dry each item thoroughly before reassembling.

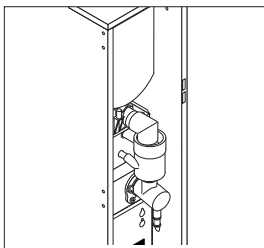


2. Rinse out the Whipper Chambers by placing the RINSE/RUN switch in the RINSE position and activating the DISPENSE switch for 5 to 10 second bursts.

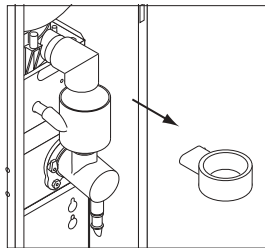


3. Remove Hoppers and refill with product.

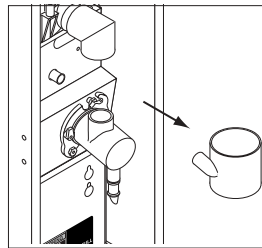
### DISASSEMBLY & CLEANING THE WHIPPER CHAMBER (Once a week)



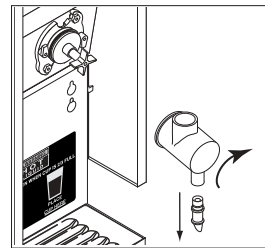
1. Open the Cabinet Door. (Door removed for illustration only)



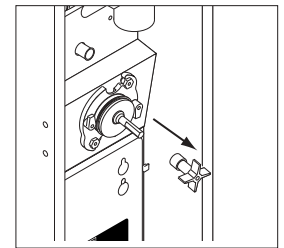
2. Remove the steam collector by pulling it forward and twisting in a clockwise rotation.



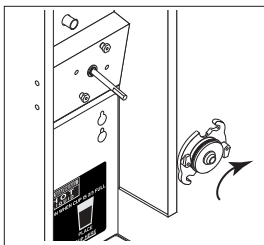
3. Pull the Mixing Chamber out of the Whipper Chamber.



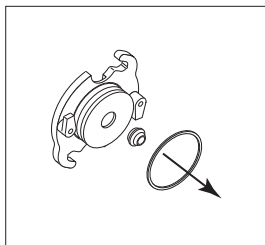
4. Twist the Whipper Chamber clockwise and pull it off the Whipper Chamber Receptacle.



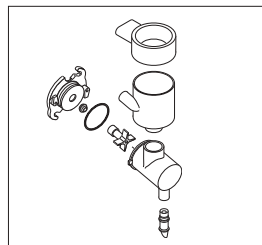
5. Pull the Frother off the Motor Shaft. Notice the flat keyway on the shaft and the matching keyway inside the Frother. It is important that these two keyways are lined up when reassembling.



6. Twist Whipper Chamber Receptacle clockwise and pull it off the Motor Shaft.



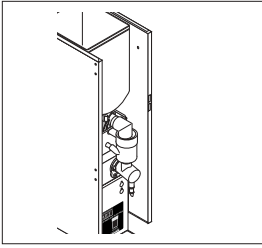
7. Slip the O-ring off the Whipper Chamber Receptacle and remove the shaft seal.



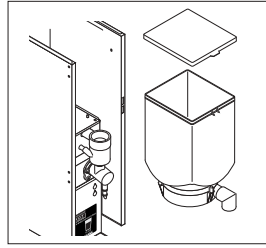
8. Wash components in a mild solution of dish detergent using a bristle brush. Rinse and dry each item thoroughly before reassembling.

## CLEANING INSTRUCTIONS for FMD-1 POWDER MIX DISPENSER

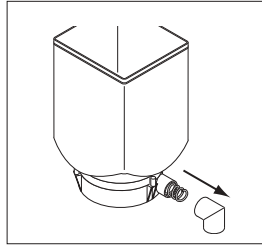
### THOROUGH CLEANING OF THE HOPPER (Once a week)



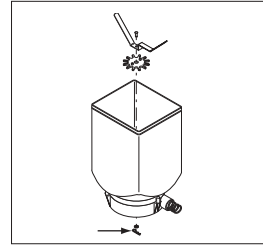
1. Open the Cabinet Door and raise the top lid. (Door removed for illustration only)



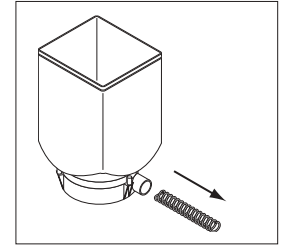
2. Remove the Hopper/Base Assembly from the Cabinet. Remove the Cover and empty the contents.



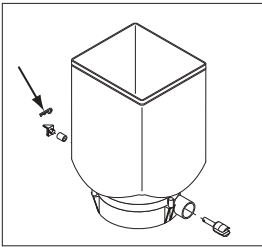
3. Pull the Ejector Elbow off the Hopper Base.



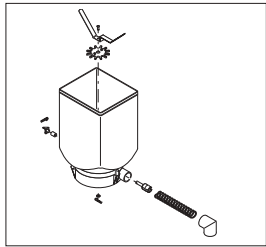
4. Remove the Wiper Blade and Drive Gear by removing the Retaining Clip from the Wiper Blade Shaft.



5. Remove Auger by pulling it out the front of Hopper Base.



6. Remove the Auger Drive Shaft by removing Retaining Clip from Auger Drive Shaft.



7. Wash all components in a mild solution of dish detergent using a bristle brush when needed. Rinse and dry each item thoroughly before reassembling.

8. Thoroughly wipe all surfaces with a clean wash cloth that has been dampened with hot water. Wipe dry with a clean dry cloth before reassembling the dispenser.