

Sure Immersion® 312 120V w/Printer Port

Height: 40.3" Width: 20.1" Depth: 23.8"
(102.4cm) (51.1cm) (60.5cm)



- Offer an expanded selection of drinks, including options for both hot and iced coffee. The iced coffee option freshly brews coffee to a higher concentrate, making it perfect to pour over a cup of ice without watering down your beverage
- Filter style coffee from a vacuum system with exclusive Air Infusion® extraction control resulting in a clean, balanced cup with a smooth finish
- Hot and Iced coffee, plus 2 café style beverages to satisfy your menu requirements in one footprint
- Each recipe has programmable air-infusion and immersion control for the ideal result in the cup
- Dispenses fresh coffee by the cup or by the carafe, in 5 programmable portion sizes from 6oz to 64oz
- 5.75" to 8.25" cup clearance
- Two 3lb bean hoppers and one 2lb bean hopper for fresh, whole beans
- Two 5lb powder hoppers
- 17" touchscreen with ability to show promotional videos
- Large pictorial graphics provide engaging drink selection
- Picture Prompted Cleaning™ Step-by-step pictures guide the operator through proper cleaning techniques for dependable performance
- Printer not included. POS printer must operate on the RS-232C standard and have a 25-pin serial connector (dB-9 at machine)

Agency:



Specifications

Product #: 44400.0201

Door: Touchscreen

Water Access: Plumbed

Legs: 4" Black Legs

Finish: Stainless/Black

Hoppers: Five

Additional Features

Hot Water Button

Electrical & Capacity

Volts*	Amps	Watts	Cord Attached	Plug Type	8oz cups/hr 236ml cups/hr	Input H ₂ O Temp.	Phase	# Wires plus Ground	Hertz
120	15.0	1800	Yes	NEMA 5-15P	63	60°F (15.5°C)	1	2	60

*When a BUNN is machine rated 120/208-240V, 120/208V or 120/240V, the higher voltage is the supply voltage needed to power the machine. The 120V is there to supply power to some components rated 120V in the machine, but it is not the supply voltage and would not power the machine if the machine is marked with the before mentioned ratings.

Plumbing Requirements

PSI	kPa	Fitting Supplied	Water Flow Required (GPM)
20-90	138-621	1/4" Male Flare Fitting	1.00

CAD Drawings

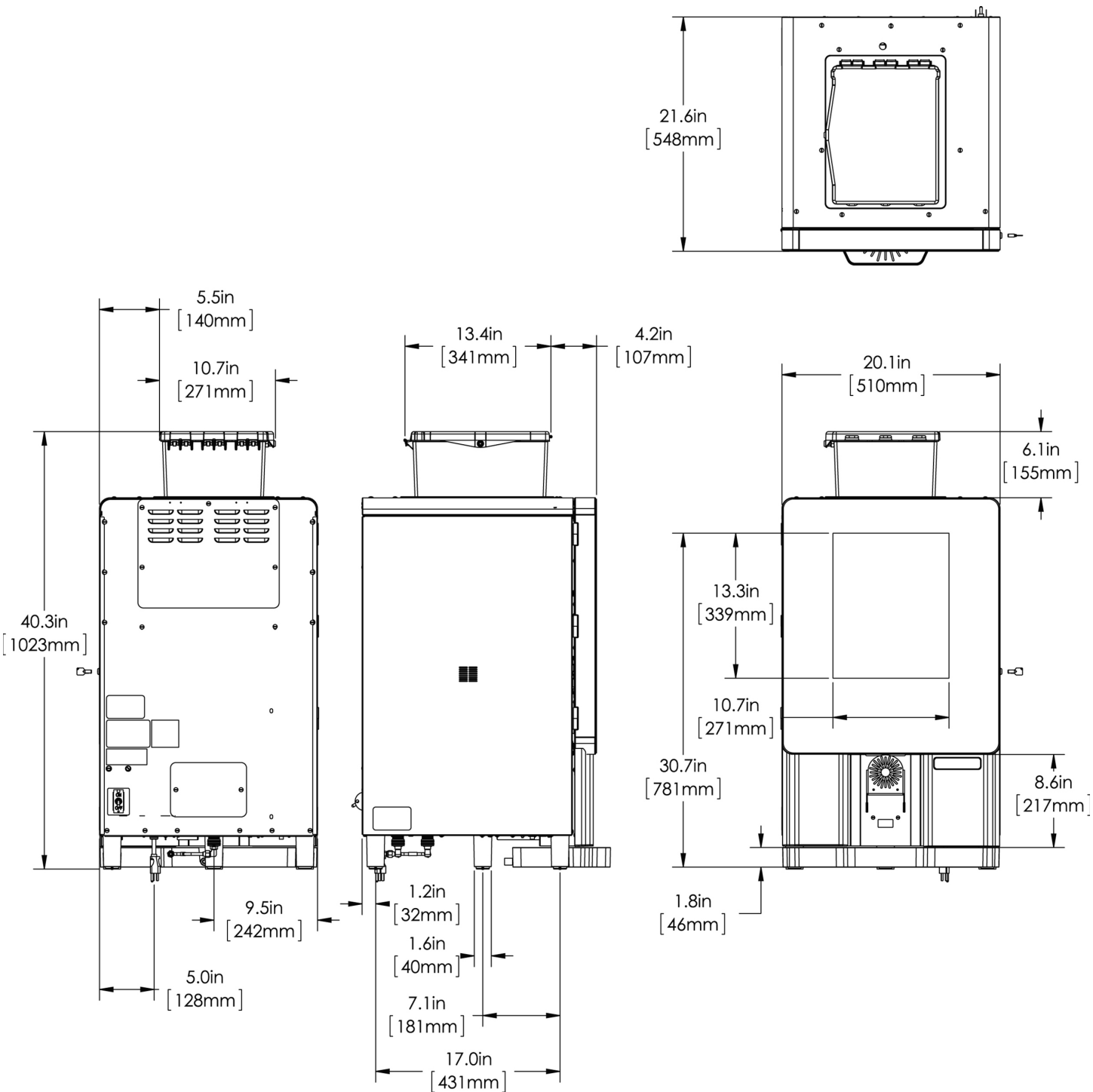
2D	Revit	KLC
●		

WARNING:



BUNN® reserves the right to change specifications and product design without notice. Such revisions do not entitle the buyer to corresponding changes, improvements, additions or replacements for previously purchased equipment. For most current specifications and other info visit bunn.com.

Last Updated:
03/16/2026



	Unit			Shipping				
	Height	Width	Depth	Height	Width	Depth	Weight	Volume
English	40.3 in.	20.1 in.	23.8 in.	51.2 in.	24.4 in.	27.8 in.	170.000 lbs	20.037 ft ³
Metric	102.4 cm	51.1 cm	60.5 cm	130.0 cm	61.9 cm	70.5 cm	77.112 kgs	0.567 m ³



BUNN® reserves the right to change specifications and product design without notice. Such revisions do not entitle the buyer to corresponding changes, improvements, additions or replacements for previously purchased equipment. For most current specifications and other info visit bunn.com.

Last Updated:
03/16/2026

Related Products & Accessories: Sure Immersion® 312 120V w/Printer Port(44400.0201)



WATER FILTER,
EQHP-10L

Product #: 39000.0001³

TABLET, CLEANING 1
JAR SURE IMMERSION

Product #: 42933.0002

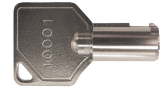
TABLET, CLEANING
2JARS/PACK SURE
IMMRSN

Product #: 42933.0102



FILTER, PAPER 1 ROLL

Product #: 50766.0001



KEY, PL518-101 SI 312

Product #: 52444.0020



SYSTEM, WQ-55(2)5L

Product #: 56000.0001¹



SYSTEM, WEQ-10(1.5)5L

Product #: 56000.0024¹



CARTRIDGE, WQ-55(2)5L

Product #: 56000.0101¹



CARTRIDGE, WEQ-10
(1.5)5L

Product #: 56000.0121¹

¹NSF Certified ²NSF Certified with spec sheet model listed ³NSF Certified under Solventum Purification ⁴NSF Certified under Vivreau Ltd ⁵NSF Certified under Zojirushi ⁶NSF Certified under Qins Inc ⁷NSF COMPONENT Certified



BUNN® reserves the right to change specifications and product design without notice. Such revisions do not entitle the buyer to corresponding changes, improvements, additions or replacements for previously purchased equipment. For most current specifications and other info visit bunn.com.

Last Updated:
03/16/2026

Serving & Holding Options: Sure Immersion® 312 120V w/Printer Port(44400.0201)

Serving and Holding selections are currently unavailable. Please contact your sales representative to find out more information.

¹NSF Certified ²NSF Certified with spec sheet model listed ³NSF Certified under Solventum Purification ⁴NSF Certified under Vivreau Ltd ⁵NSF Certified under Zojirushi ⁶NSF Certified under Qins Inc ⁷NSF COMPONENT Certified



BUNN® reserves the right to change specifications and product design without notice. Such revisions do not entitle the buyer to corresponding changes, improvements, additions or replacements for previously purchased equipment. For most current specifications and other info visit bunn.com.

Last Updated:
03/16/2026