

# NITRON-4X, 120V NO GRPH

Height: 33.9" (86.1cm) Width: 9.8" (24.9cm) Depth: 29.8" (75.7cm)



- At a rate of one 16oz drink per minute, can dispense 65 drinks before exceeding 41°F (using 75°F incoming water)
- 11" x 11" graphic panel on the LED-lighted door can easily be changed - without tools- to promote unique brands or beverage offerings
- Includes Gas Module specifically designed for Nitron Cold Draft dispensers, eliminating the need for other external gas sources
- Selectable nitrogen on up to 2 beverages using concentrates or refillable containers
- Patented High Intensity® mixing chamber assures a perfectly blended finished beverage, from cup to cup
- Patented BUNN gas infusion technology can produce up to 3 minutes of cascading micro-bubbles
- Automatic water bath fill maintains water bath level for optimal cold beverage capacity
- Refrigerated product cabinet protects flavor integrity and product life
- Service-friendly design makes set-up and maintenance simple
- Mounted on standard 3/8"-16 UNC threads, chrome plated brass tap handles are interchangeable with custom handles for a more personalized look
- Large dispense area accommodates taller cups and carafes up to 8.76"

Agency:



## Specifications

**Product #:** 62400.0005

**Flavors:** 4 Flavors

**Finish:** Stainless/Black

**Refrigerant:** R-290

**Ice Bank:** 8.00 lbs (3.629 kgs)

**Dispense:** Pull & Hold

**Handle:** Stainless Steel

**Legs:** 4" Black Legs

## Additional Features

## Electrical & Capacity

Volts*	Amps	Watts	Cord Attached	Plug Type	8oz cups/hr 236ml cups/hr	Input H <sup>2</sup> O Temp.	Phase	# Wires plus Ground	Hertz
120	6	-	Yes	NEMA 5-15P	-	60°F (15.5°C)	1	2	60

\*When a BUNN is machine rated 120/208-240V, 120/208V or 120/240V, the higher voltage is the supply voltage needed to power the machine. The 120V is there to supply power to some components rated 120V in the machine, but it is not the supply voltage and would not power the machine if the machine is marked with the before mentioned ratings.

## Plumbing Requirements

PSI	kPa	Fitting Supplied	Water Flow Required (GPM)
30-90	207-621	3/8" Male Flare Fitting	-

## CAD Drawings

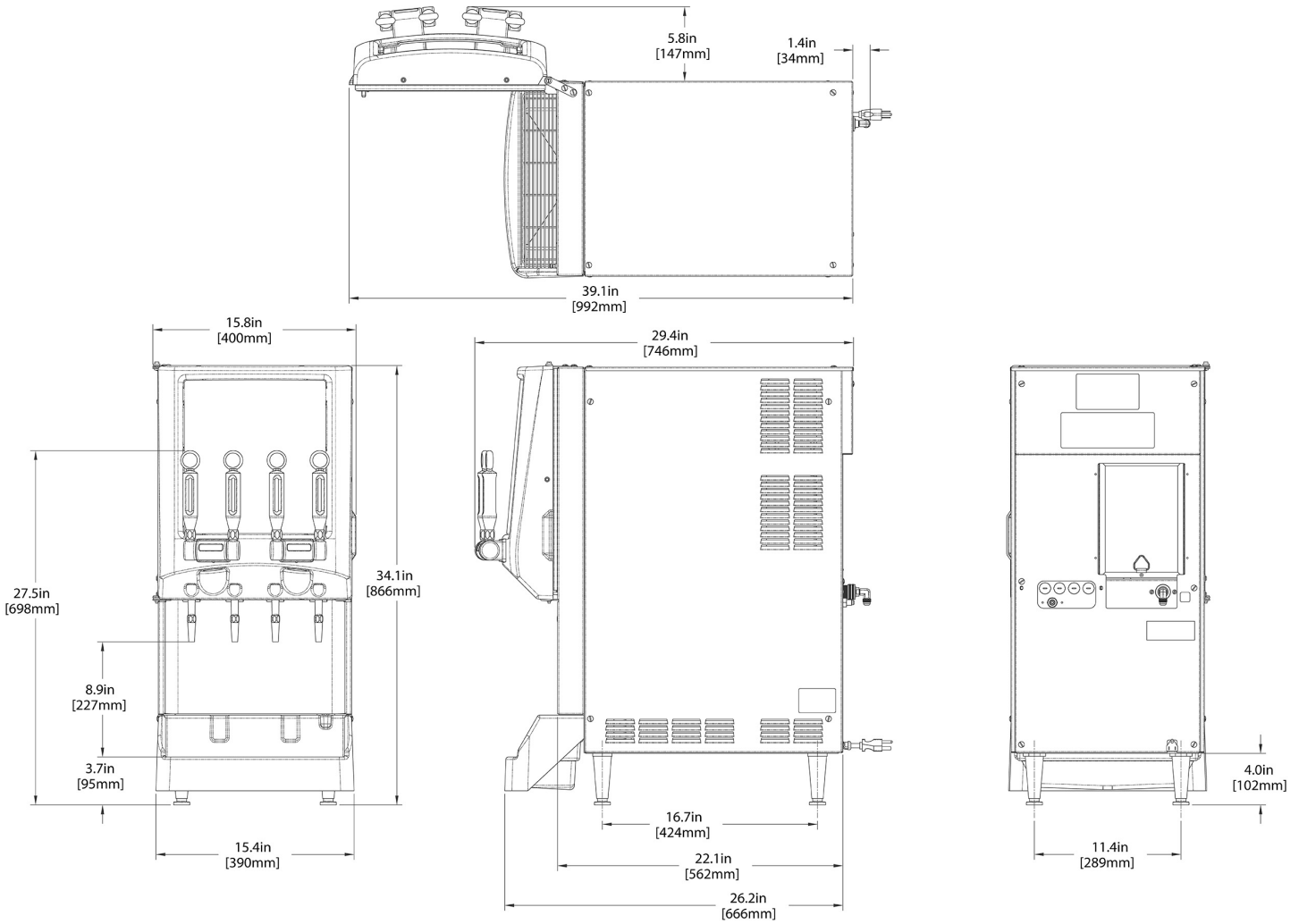
2D	Revit	KLC
●		

**WARNING:**



BUNN® reserves the right to change specifications and product design without notice. Such revisions do not entitle the buyer to corresponding changes, improvements, additions or replacements for previously purchased equipment. For most current specifications and other info visit [bunn.com](http://bunn.com).

Last Updated:  
03/02/2026



Unit			Shipping					
	Height	Width	Depth	Height	Width	Depth	Weight	Volume
English	33.9 in.	9.8 in.	29.8 in.	35.9 in.	15.8 in.	29.4 in.	192.031 lbs	9.651 ft <sup>3</sup>
Metric	86.1 cm	24.9 cm	75.7 cm	91.2 cm	40.1 cm	74.7 cm	87.105 kgs	0.273 m <sup>3</sup>



BUNN® reserves the right to change specifications and product design without notice. Such revisions do not entitle the buyer to corresponding changes, improvements, additions or replacements for previously purchased equipment. For most current specifications and other info visit [bunn.com](http://bunn.com).

Last Updated:  
03/02/2026

# Related Products & Accessories: NITRON-4X, 120V NO GRPH(62400.0005)



SANITIZER, KAY-5  
(BOX-50 PKTS)

Product #: 24634.0001



CONTAINER ASSY,  
REFILLABLE

Product #: 39302.0000<sup>2</sup>



KIT, PRIMARY N2  
REGULATOR

Product #: 54060.0000<sup>2</sup>



NGM, 220-240V 50-60HZ  
ME

Product #: 55660.0006<sup>1</sup>



SYSTEM, WEQ-10(1.5)5

Product #: 56000.0027<sup>1</sup>



CARTRIDGE, WEQ-10  
(1.5)5

Product #: 56000.0122<sup>1</sup>

<sup>1</sup>NSF Certified <sup>2</sup>NSF Certified with spec sheet model listed <sup>3</sup>NSF Certified under Solventum Purification <sup>4</sup>NSF Certified under Mavea LLC <sup>5</sup>NSF Certified under Zojirushi <sup>6</sup>NSF Certified under Qins Inc <sup>7</sup>NSF COMPONENT Certified



BUNN® reserves the right to change specifications and product design without notice. Such revisions do not entitle the buyer to corresponding changes, improvements, additions or replacements for previously purchased equipment. For most current specifications and other info visit [bunn.com](http://bunn.com).

Last Updated:  
03/02/2026

# Serving & Holding Options: NITRON-4X, 120V NO GRPH(62400.0005)

\*Serving and Holding selections are currently unavailable. Please contact your sales representative to find out more information.\*

---

<sup>1</sup>NSF Certified <sup>2</sup>NSF Certified with spec sheet model listed <sup>3</sup>NSF Certified under Solventum Purification <sup>4</sup>NSF Certified under Mavea LLC <sup>5</sup>NSF Certified under Zojirushi <sup>6</sup>NSF Certified under Qins Inc <sup>7</sup>NSF COMPONENT Certified



BUNN® reserves the right to change specifications and product design without notice. Such revisions do not entitle the buyer to corresponding changes, improvements, additions or replacements for previously purchased equipment.  
For most current specifications and other info visit [bunn.com](http://bunn.com).

Last Updated:  
03/02/2026