

# ICB-DV

Height: 26.8" Width: 10.2" Depth: 22.1"  
(68.1cm) (25.9cm) (56.1cm)



- Sleek modernized design language, with rounded angles on the corners and trunk
- Digital readout displays in English, Spanish, or French ---for easier programming and control--- and can show either 'Standard' or Metric measurements. Digital readout also shows machine status, and targeted advertising messages can be programmed for display.
- BUNN Infusion Series technology allows for multiple recipes from one footprint --- with three brew buttons and two batch sizes
- Energy-saver mode reduces tank temperature during idle periods
- The exclusive Peak Extraction® Sprayhead provides improved uniformity of extraction and greater resistance to limescale buildup
- Electronic funnel lock prevents removal of each brew funnel until drip- through is complete
- USB programming capable
- Brew counter keeps track of how many batches are brewed
- Pre-infusion and pulse brew for maximum flavor extraction. Cold brew lockout & digital temperature control further ensure top-notch brewing.
- Hot water faucet (supplied for custom installation)
- Dual voltage adaptable (Can operate at 120V/15 amp or 120/208-240V/20 amp)
- Servers not included unless otherwise noted

Server(s) sold separately

Agency:



## Specifications

**Product #:** 53100.0100

**Funnel:** Black Plastic

**Water Access:** Plumbed

**Interface:** Wireless

**Finish:** Stainless

## Additional Features

BrewWISE

## Electrical & Capacity

Volts*	Amps	Watts	Cord Attached	Plug Type	8oz cups/hr 236ml cups/hr	Input H <sub>2</sub> O Temp.	Phase	# Wires plus Ground	Hertz
120	14	1700	Yes	NEMA 5-15P	82	60°F (15.5°C)	1	2	60
120/208	14	2900	-	N/A	136	60°F (15.5°C)	1	3	60
120/240	17	4050	-	N/A	181	60°F (15.5°C)	1	3	60

\*When a BUNN is machine rated 120/208-240V, 120/208V or 120/240V, the higher voltage is the supply voltage needed to power the machine. The 120V is there to supply power to some components rated 120V in the machine, but it is not the supply voltage and would not power the machine if the machine is marked with the before mentioned ratings.

## Plumbing Requirements

PSI	kPa	Fitting Supplied	Water Flow Required (GPM)
20-90	138-621	3/8" Male Flare Fitting	1.00

## CAD Drawings

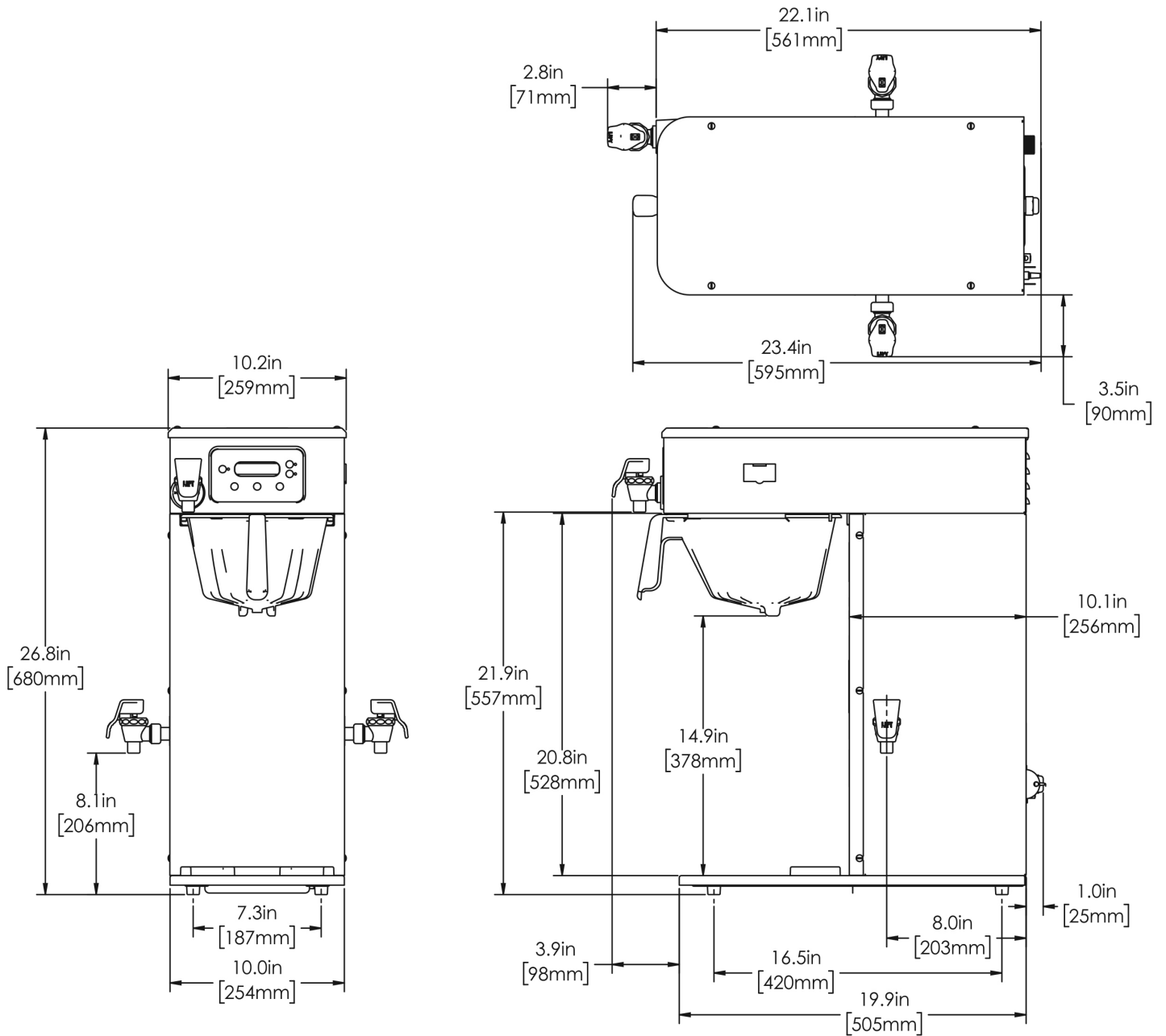
2D	Revit	KLC
●		

**WARNING:** This product can expose you to chemicals including Bisphenol A (BPA), which is known to the State of California to cause birth defects or other reproductive harm. For more information go to [www.P65Warnings.ca.gov](http://www.P65Warnings.ca.gov)



BUNN® reserves the right to change specifications and product design without notice. Such revisions do not entitle the buyer to corresponding changes, improvements, additions or replacements for previously purchased equipment. For most current specifications and other info visit [bunn.com](http://bunn.com).

Last Updated:  
03/27/2026



	Unit			Shipping				
	Height	Width	Depth	Height	Width	Depth	Weight	Volume
English	26.8 in.	10.2 in.	22.1 in.	35.8 in.	16.6 in.	28.0 in.	46.860 lbs	7.321 ft <sup>3</sup>
Metric	68.1 cm	25.9 cm	56.1 cm	90.9 cm	42.2 cm	71.1 cm	21.256 kgs	0.207 m <sup>3</sup>



BUNN® reserves the right to change specifications and product design without notice. Such revisions do not entitle the buyer to corresponding changes, improvements, additions or replacements for previously purchased equipment. For most current specifications and other info visit [bunn.com](http://bunn.com).

Last Updated:  
03/27/2026

# Related Products & Accessories: ICB-DV(53100.0100)



FILTERS, GOURMET 500  
500/1 50/CL

Product #: 20138.1000



WATER FILTER,  
EQHP-10L

Product #: 39000.0001<sup>3</sup>



WATER FILTER,  
EQHP-10

Product #: 39000.0004<sup>3</sup>



SYSTEM, WQ-55(2)5L

Product #: 56000.0001<sup>1</sup>



SYSTEM, WQ-55(2)5

Product #: 56000.0004<sup>1</sup>



SYSTEM, WEQ-10(1.5)5L

Product #: 56000.0024<sup>1</sup>



SYSTEM, WEQ-10(1.5)5

Product #: 56000.0027<sup>1</sup>



CARTRIDGE, WQ-55(2)5L

Product #: 56000.0101<sup>1</sup>



CARTRIDGE, WQ-55(2)5

Product #: 56000.0104<sup>1</sup>



CARTRIDGE, WEQ-10  
(1.5)5L

Product #: 56000.0121<sup>1</sup>



CARTRIDGE, WEQ-10  
(1.5)5

Product #: 56000.0122<sup>1</sup>

<sup>1</sup>NSF Certified <sup>2</sup>NSF Certified with spec sheet model listed <sup>3</sup>NSF Certified under Solventum Purification <sup>4</sup>NSF Certified under Vivreau Ltd <sup>5</sup>NSF Certified under Zojirushi <sup>6</sup>NSF Certified under Qins Inc <sup>7</sup>NSF COMPONENT Certified



BUNN® reserves the right to change specifications and product design without notice. Such revisions do not entitle the buyer to corresponding changes, improvements, additions or replacements for previously purchased equipment. For most current specifications and other info visit [bunn.com](http://bunn.com).

Last Updated:  
03/27/2026

# Serving & Holding Options: ICB-DV(53100.0100)

 <p><b>AIRPOT, 2.5L SST LA SINGLE PK</b></p> <p>Product #: 32125.0000<sup>6</sup> Mfr#:SVAP-2500F-N</p>	 <p><b>AIRPOT, 2.5L SST LA 6/ CASE</b></p> <p>Product #: 32125.0100<sup>6</sup> Mfr#:SVAP-2500F-N</p>	 <p><b>AIRPOT, 3.0L SST LA SINGLE PK</b></p> <p>Product #: 32130.0000<sup>6</sup> Mfr#:SVAP-3000F-N</p>	 <p><b>AIRPOT, 3.0L SST LA 6/ CASE</b></p> <p>Product #: 32130.0100<sup>6</sup> Mfr#:SVAP-3000F-N</p>	 <p><b>AIRPOT, 3.8L SST LA SINGLE PK</b></p> <p>Product #: 36725.0000<sup>6</sup> Mfr#:SVAP-3800F-N</p>
--	--	--	--	--

 <p><b>AIRPOT, 3.8L SST LA 6/ CASE</b></p> <p>Product #: 36725.0100<sup>6</sup> Mfr#:SVAP-3800F-N</p>	 <p><b>TF SERVER, DSG2 1G SST NOBASE</b></p> <p>Product #: 42700.0050<sup>1</sup></p>	 <p><b>TF SERVER, DSG2 1G BLK NOBASE</b></p> <p>Product #: 42700.0051<sup>1</sup></p>	 <p><b>TF SERVER, 1G DSG GEN3 NOBASE</b></p> <p>Product #: 42700.0250<sup>1</sup></p>	 <p><b>TF SERVER, DSG2 1.5G SST NOBAS</b></p> <p>Product #: 42750.0050<sup>1</sup></p>
--	--	--	--	---

 <p><b>TF SERVER, 1G/3.8L MECH NOBASE</b></p> <p>Product #: 44000.0050<sup>1</sup></p>	 <p><b>TF SERVER, 1G/3.8L MECH BLK NOBASE</b></p> <p>Product #: 44000.0051<sup>1</sup></p>	 <p><b>TF SERVER, 1G MECH GEN3 NOBASE</b></p> <p>Product #: 44000.0250<sup>1</sup></p>	 <p><b>STAND ASSY KIT, TF SERVER</b></p> <p>Product #: 54473.1000</p>
---	---	---	--

<sup>1</sup>NSF Certified <sup>2</sup>NSF Certified with spec sheet model listed <sup>3</sup>NSF Certified under Solventum Purification <sup>4</sup>NSF Certified under Vivreau Ltd <sup>5</sup>NSF Certified under Zojirushi <sup>6</sup>NSF Certified under Qins Inc <sup>7</sup>NSF COMPONENT Certified



BUNN® reserves the right to change specifications and product design without notice. Such revisions do not entitle the buyer to corresponding changes, improvements, additions or replacements for previously purchased equipment. For most current specifications and other info visit [bunn.com](http://bunn.com).

Last Updated:  
03/27/2026