

ITCB-DV PE, 29" W/Tray

Height: 35.0" (88.9cm) Width: 11.6" (29.5cm) Depth: 22.5" (57.2cm)



- Produce fresh cold brew in minutes with the new Cold Brew mode, enabling operators to brew an on-demand batch of concentrate or ready-to-drink cold brew quickly and consistently with operational ease
- Add Bubble Tea to the menu with the new Bubble Tea Kit (54165.1018)
- 4.3" Color Touchscreen aids in customizing recipes, brewing options and control
- SmartWAVE sprayhead technology creates an industry best uniformity of extraction for exceptionally smooth tasting coffee
- Customers can easily add up to 10 screensaver images to advertise and promote their brand and products
- BUNN Infusion Series technology allows for multiple recipes from one footprint
- Includes both coffee (Stainless) and tea (Plastic) funnels
- Energy-saver mode reduces tank temperature during idle periods
- Exclusive Peak Extraction™ Sprayhead is multi-directional with a 17- hole design to ensure ultimate uniformity of extraction
- Electronic funnel lock prevents removal of each brew funnel until drip- through is complete
- Includes integrated flip tray that converts to three positions: thermal carafe, airport and tea dispenser
- Dual voltage adaptable (can operate at 120V/15 amp or 120/208-240V/20 amp)
- Optional BUNNlink® remote monitoring support (kit required)

Agency:

Server(s) sold separately



Specifications

Product #: 52500.0100

Water Access: Plumbed

Interface: Wireless

Finish: Stainless

Funnel: Stainless Steel

Funnel: Translucent Tea Funnel

Additional Features

BrewWISE

Electrical & Capacity

Volts*	Amps	Watts	Cord Attached	Plug Type	8oz cups/hr 236ml cups/hr	Input H ₂ O Temp.	Phase	# Wires plus Ground	Hertz
120	14	1700	Yes	NEMA 5-15P	80	60°F (15.5°C)	1	2	60
120/208	13	2650	-	N/A	123	60°F (15.5°C)	1	3	60
120/240	15	3500	-	N/A	163	60°F (15.5°C)	1	3	60

*When a BUNN is machine rated 120/208-240V, 120/208V or 120/240V, the higher voltage is the supply voltage needed to power the machine. The 120V is there to supply power to some components rated 120V in the machine, but it is not the supply voltage and would not power the machine if the machine is marked with the before mentioned ratings.

Plumbing Requirements

PSI	kPa	Fitting Supplied	Water Flow Required (GPM)
20-90	138-621	1/4" Male Flare Fitting	1.25

CAD Drawings

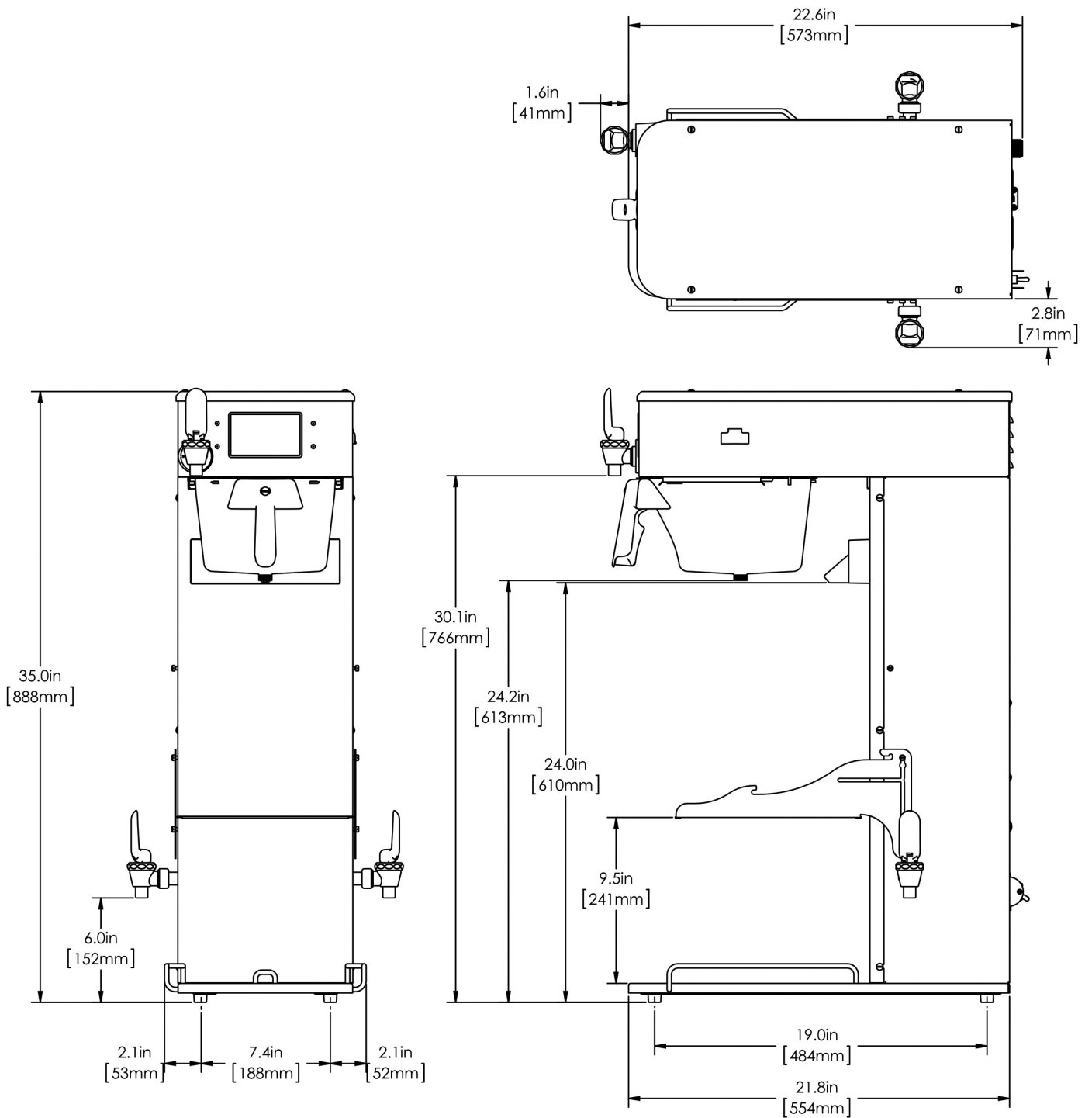
2D	Revit	KLC
●		

WARNING: This product can expose you to chemicals including Bisphenol A (BPA), which is known to the State of California to cause birth defects or other reproductive harm. For more information go to www.P65Warnings.ca.gov



BUNN® reserves the right to change specifications and product design without notice. Such revisions do not entitle the buyer to corresponding changes, improvements, additions or replacements for previously purchased equipment. For most current specifications and other info visit bunn.com.

Last Updated:
03/13/2026



	Unit			Shipping				
	Height	Width	Depth	Height	Width	Depth	Weight	Volume
English	35.0 in.	11.6 in.	22.5 in.	38.0 in.	13.3 in.	27.4 in.	41.610 lbs	7.976 ft ³
Metric	88.9 cm	29.5 cm	57.2 cm	96.5 cm	33.7 cm	69.5 cm	18.874 kgs	0.226 m ³



BUNN® reserves the right to change specifications and product design without notice. Such revisions do not entitle the buyer to corresponding changes, improvements, additions or replacements for previously purchased equipment. For most current specifications and other info visit bunn.com.

Last Updated:
03/13/2026

Related Products & Accessories:ITCB-DV PE, 29" W/Tray(52500.0100)



FILTERS, GOURMET 500
500/1 50/CL

Product #: 20138.1000



FUNNEL ASSY, SMART
COFFEE BLK-CLEARED

Product #: 53463.0021

FUNNEL ASSY, TEA
NATURAL QUICK BREW

Product #: 53463.0023

FUNNEL ASSY, TEA
NATURAL QUICK BREW

Product #: 53463.0039²



STAND ASSY KIT, TF
SERVER

Product #: 54473.1000



SYSTEM, WQ-55(2)5

Product #: 56000.0004¹



SYSTEM, WQ-SFTN4000
(1.5)10 TEA

Product #: 56000.0021¹



SYSTEM, WEQ-10(1.5)5L

Product #: 56000.0024¹



SYSTEM, WEQ-10(1.5)5

Product #: 56000.0027¹



SYSTEM, WEQ-
SFTN3500(1)10 TEA

Product #: 56000.0030



CARTRIDGE, WQ-55(2)5

Product #: 56000.0104¹



CARTRIDGE, WEQ-10
(1.5)5L

Product #: 56000.0121¹



CARTRIDGE, WEQ-10
(1.5)5

Product #: 56000.0122¹



CARTRIDGE, WEQ-
SFTN3500(1)10 TEA

Product #: 56000.0129¹



CARTRIDGE, WQ-
SFTN4000(1.5)10 TEA

Product #: 56000.0133¹

¹NSF Certified ²NSF Certified with spec sheet model listed ³NSF Certified under Solventum Purification ⁴NSF Certified under Vivreau Ltd ⁵NSF Certified under Zojirushi ⁶NSF Certified under Qins Inc ⁷NSF COMPONENT Certified



BUNN® reserves the right to change specifications and product design without notice. Such revisions do not entitle the buyer to corresponding changes, improvements, additions or replacements for previously purchased equipment. For most current specifications and other info visit bunn.com.

Last Updated:
03/13/2026

Related Products & Accessories:ITCB-DV PE, 29" W/Tray(52500.0100)



KIT, BUNNLINK WIFI TEA AND INFUSION

Product #: 57132.0003



KIT, LTE BUNNLINK BOARD TEA AND INFUSION

Product #: 57133.0003



BUNN® reserves the right to change specifications and product design without notice. Such revisions do not entitle the buyer to corresponding changes, improvements, additions or replacements for previously purchased equipment. For most current specifications and other info visit bunn.com.

Last Updated:
03/13/2026

Serving & Holding Options: ITCB-DV PE, 29" W/Tray(52500.0100)



AIRPOT, 2.5L SST LA
SINGLE PK

Product #: 32125.0000⁶
Mfr#:SVAP-2500F-N



AIRPOT, 2.5L SST LA 6/
CASE

Product #: 32125.0100⁶
Mfr#:SVAP-2500F-N



AIRPOT, 3.0L SST LA
SINGLE PK

Product #: 32130.0000⁶
Mfr#:SVAP-3000F-N



AIRPOT, 3.0L SST LA 6/
CASE

Product #: 32130.0100⁶
Mfr#:SVAP-3000F-N



TDS-3, 3 GAL

Product #: 33000.0000¹



TDS-3.5, 3.5 GAL

Product #: 33000.0023¹



TDO-4, RESERVOIR

Product #: 34100.0000¹



TDO-5, RESERVOIR

Product #: 34100.0001¹



TDO-4, RESERVOIR
BREW THRU

Product #: 34100.0002¹



TDO-5, RESERVOIR,
BREW THRU

Product #: 34100.0003¹



THERMAL CARAFE, BLK
1.9L 12PK

Product #: 36029.0000⁵
Mfr#:SH-DE19A



THERMAL CARAFE, BLK
1.83 L 1PK

Product #: 36029.0001⁵
Mfr#:SH-DE19A



THERMAL CARAFE, ORN
1.9L 12PK

Product #: 36252.0000⁵
Mfr#:SH-DE19A



THERMAL CARAFE, ORN
1.9L 1PK

Product #: 36252.0001⁵
Mfr#:SH-DE19A



AIRPOT, 3.8L SST LA
SINGLE PK

Product #: 36725.0000⁶
Mfr#:SVAP-3800F-N



BUNN® reserves the right to change specifications and product design without notice. Such revisions do not entitle the buyer to corresponding changes, improvements, additions or replacements for previously purchased equipment. For most current specifications and other info visit bunn.com.

Last Updated:
03/13/2026

Serving & Holding Options: ITCB-DV PE, 29" W/Tray(52500.0100)



AIRPOT, 3.8L SST LA 6/
CASE

Product #: 36725.0100⁶

Mfr#:SVAP-3800F-N



TDO-N-3.5, RSVR

Product #: 39600.0001¹



TDO-N-4.0, RSVR BUNN

Product #: 39600.0002¹



TDO-N-3.5, RSVR W/
LIFT HANDLE

Product #: 39600.0031¹



TDO-N-3.5, RSVR W/
PINCH TUBE

Product #: 39600.0047¹



CARAFE, SST 1.9L SHRT
BLK 1

Product #: 40163.0000⁶



TF SERVER, 1G MECH
GEN3 NOBASE

Product #: 44000.0250¹



BUNN® reserves the right to change specifications and product design without notice. Such revisions do not entitle the buyer to corresponding changes, improvements, additions or replacements for previously purchased equipment. For most current specifications and other info visit bunn.com.

Last Updated:
03/13/2026