


ICB-DV PE, 120V

Height: 26.8" (68.1cm) Width: 10.2" (25.9cm) Depth: 22.1" (56.1cm)



- 4.3" Color Touchscreen aides in customizing recipes, brewing options and control
- The Infusion Series® Platinum Edition relies on the powerful duo of the Peak Extraction Sprayhead and SmartWAVE® technology to further enhance the uniformity of extraction and resistance to limescale buildup.
- USB programming for uploading and downloading recipes and software updates, all in less than a minute
- Brews into 2.5 to 3.8L (84 to 128 oz) airtots and 3.8 to 5.7L (1 to 1.5 gallon) baseless Thermofresh servers
- BUNN Infusion Series technology allows for multiple recipes from one footprint
- Energy-saver mode reduces tank temperature during idle periods
- Electronic funnel lock prevents removal of the brew funnel until drip- through is complete
- Brew counter keeps track of how many batches are brewed
- Pre-infusion and pulse brew for maximum flavor extraction. Cold brew lockout & digital temperature control further ensure top-notch brewing
- Hot water faucet (supplied for custom installation)
- Dual voltage adaptable (Can operate at 120V/15 amp or 120/208-240V/20 amp)
- Servers not included unless otherwise noted

 Server(s) sold separately

Agency:



Specifications

Product #: 53300.6100

Funnel: Stainless Steel

Water Access: Plumbed

Interface: Wireless

Finish: Stainless

Additional Features

BrewWISE

Electrical & Capacity

Volts*	Amps	Watts	Cord Attached	Plug Type	8oz cups/hr 236ml cups/hr	Input H ² O Temp.	Phase	# Wires plus Ground	Hertz
120	14	1700	-	-	-	60°F (15.5°C)	1	2	60

*When a BUNN is machine rated 120/208-240V, 120/208V or 120/240V, the higher voltage is the supply voltage needed to power the machine. The 120V is there to supply power to some components rated 120V in the machine, but it is not the supply voltage and would not power the machine if the machine is marked with the before mentioned ratings.

Plumbing Requirements

PSI	kPa	Fitting Supplied	Water Flow Required (GPM)
20-90	138-621	3/8" Male Flare Fitting	1.00

CAD Drawings

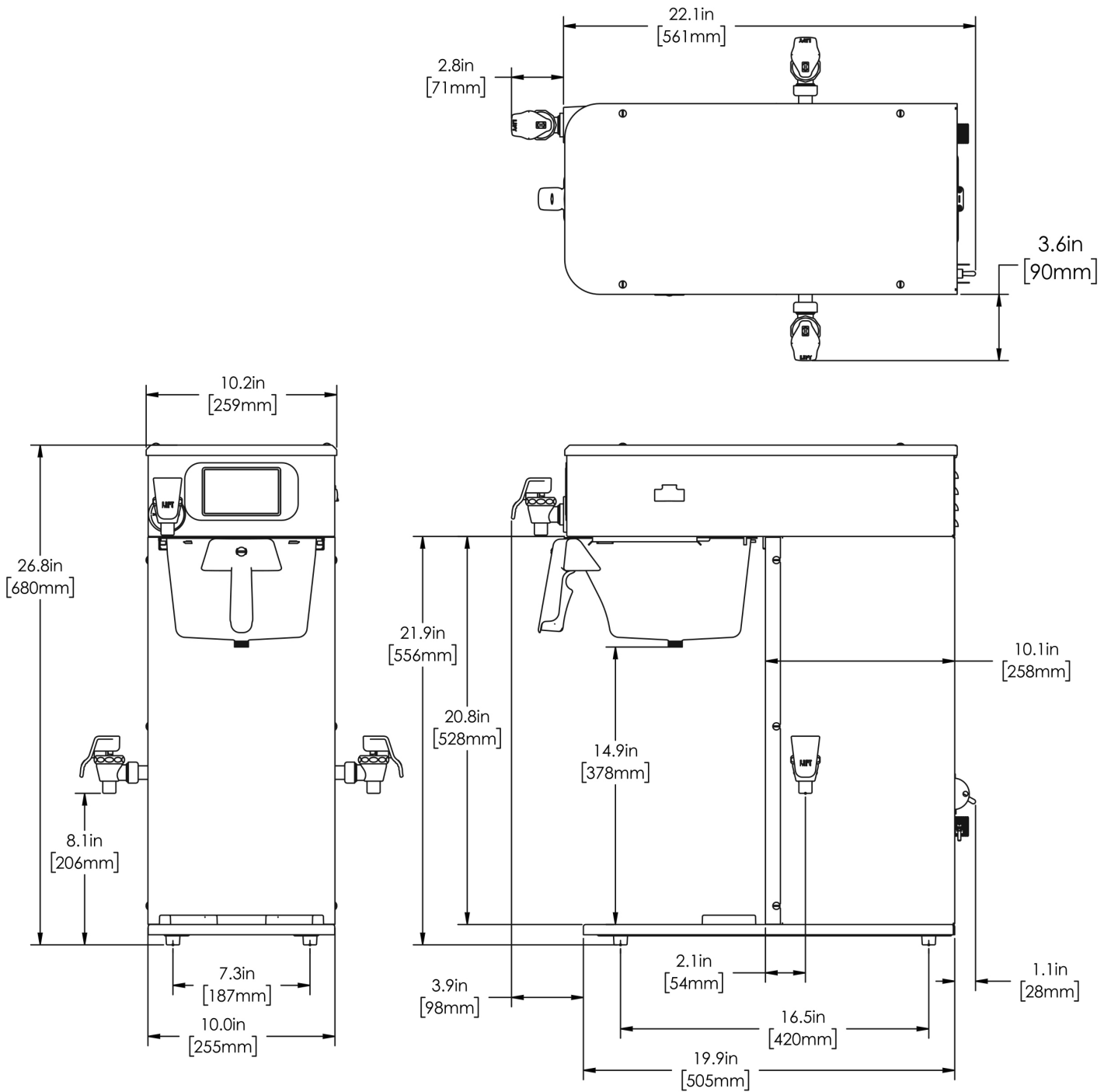
2D	Revit	KLC
●		

 **WARNING:**



BUNN® reserves the right to change specifications and product design without notice. Such revisions do not entitle the buyer to corresponding changes, improvements, additions or replacements for previously purchased equipment. For most current specifications and other info visit bunn.com.

Last Updated:
07/08/2025





	Unit			Shipping				
	Height	Width	Depth	Height	Width	Depth	Weight	Volume
English	26.8 in.	10.2 in.	22.1 in.	34.9 in.	13.3 in.	27.4 in.	53.750 lbs	7.321 ft ³
Metric	68.1 cm	25.9 cm	56.1 cm	88.6 cm	33.7 cm	69.5 cm	24.381 kgs	0.207 m ³



BUNN® reserves the right to change specifications and product design without notice. Such revisions do not entitle the buyer to corresponding changes, improvements, additions or replacements for previously purchased equipment. For most current specifications and other info visit bunn.com.

Last Updated:
07/08/2025

Related Products & Accessories: ICB-DV PE, 120V(53300.6100)

 <p>FILTERS, GOURMET 500 500/1 50/CL</p> <hr/> <p>Product #: 20138.1000</p>	 <p>STAND ASSY KIT, TF SERVER</p> <hr/> <p>Product #: 54473.1000</p>	<p>FUNNEL ASSY, SST INFUSION COFFEE ENG/ FR</p> <hr/> <p>Product #: 54675.7001²</p>	<p>KIT, BUNNLINK WIFI TEA AND INFUSION</p> <hr/> <p>Product #: 57132.0003</p>	<p>KIT, LTE BUNNLINK BOARD TEA AND INFUSION</p> <hr/> <p>Product #: 57133.0003</p>
--	---	--	---	--

¹NSF Certified ²NSF Certified with spec sheet model listed ³NSF Certified under Solventum Purification ⁴NSF Certified under Mavea LLC ⁵NSF Certified under Zojirushi ⁶NSF Certified under Qins Inc ⁷NSF COMPONENT Certified



BUNN® reserves the right to change specifications and product design without notice. Such revisions do not entitle the buyer to corresponding changes, improvements, additions or replacements for previously purchased equipment. For most current specifications and other info visit bunn.com.

Last Updated:
07/08/2025

Serving & Holding Options: ICB-DV PE, 120V(53300.6100)



AIRPOT, 2.5L SST LA
SINGLE PK

Product #: 32125.0000⁶

Mfr#:SVAP-2500F-N



AIRPOT, 2.5L SST LA 6/
CASE

Product #: 32125.0100⁶

Mfr#:SVAP-2500F-N



AIRPOT, 3.0L SST LA
SINGLE PK

Product #: 32130.0000⁶

Mfr#:SVAP-3000F-N



AIRPOT, 3.0L SST LA 6/
CASE

Product #: 32130.0100⁶

Mfr#:SVAP-3000F-N



AIRPOT, 3.8L SST LA
SINGLE PK

Product #: 36725.0000⁶

Mfr#:SVAP-3800F-N



AIRPOT, 3.8L SST LA 6/
CASE

Product #: 36725.0100⁶

Mfr#:SVAP-3800F-N



STAND ASSY, TF
SERVER

Product #: 39795.0003



TF SERVER, 1G DSG
GEN3 NOBASE

Product #: 42700.6250¹



TF SERVER, 1G MECH
GEN3 NOBASE

Product #: 44000.6250¹

¹NSF Certified ²NSF Certified with spec sheet model listed ³NSF Certified under Solventum Purification ⁴NSF Certified under Mavea LLC ⁵NSF Certified under Zojirushi ⁶NSF Certified under Qins Inc ⁷NSF COMPONENT Certified



BUNN® reserves the right to change specifications and product design without notice. Such revisions do not entitle the buyer to corresponding changes, improvements, additions or replacements for previously purchased equipment. For most current specifications and other info visit bunn.com.

Last Updated:
07/08/2025