

# Sure Immersion 312 120/208-240V

Height: 40.3" Width: 20.1" Depth: 23.8"  
(102.4cm) (51.1cm) (60.5cm)



- Filter style coffee from a vacuum system with exclusive Air Infusion® extraction control resulting in a clean, balanced cup with a smooth finish
- Hot and Iced coffee, plus 2 café style beverages to satisfy your menu requirements in one footprint
- Each recipe has programmable air-infusion and immersion control for the ideal result in the cup
- Dispenses fresh coffee by the cup or by the carafe, in 5 programmable portion sizes from 6oz to 64oz
- 5.75" to 8.25" cup clearance
- Two 3lb bean hoppers and one 2lb bean hopper for fresh, whole beans
- Two 5lb powder hoppers
- 17" touchscreen with ability to show promotional videos
- Large pictorial graphics provide engaging drink selection
- Picture Prompted Cleaning™ Step-by-step pictures guide the operator through proper cleaning techniques for dependable performance

Agency:



## Specifications

**Product #:** 44400.0240

**Flavors:** 3 Flavors

**Water Access:** Plumbed

**Finish:** Stainless/Black

**Hoppers:** Five

**Hopper Capacity:** 8.00 lbs (3.629 kgs)

**Door:** Lit

**Dispense:** Portion Control

## Additional Features

Hot Water Button

## Electrical & Capacity

Volts*	Amps	Watts	Cord Attached	Plug Type	8oz cups/hr 236ml cups/hr	Input H <sup>2</sup> O Temp.	Phase	# Wires plus Ground	Hertz
120/208-240	13.0	3450	Yes	NEMA L14-20P	64	60°F (15.5°C)	1	3	60

\*When a BUNN is machine rated 120/208-240V, 120/208V or 120/240V, the higher voltage is the supply voltage needed to power the machine. The 120V is there to supply power to some components rated 120V in the machine, but it is not the supply voltage and would not power the machine if the machine is marked with the before mentioned ratings.

## Plumbing Requirements

PSI	kPa	Fitting Supplied	Water Flow Required (GPM)
20-90	138-621	1/4" Male Flare Fitting	1.00

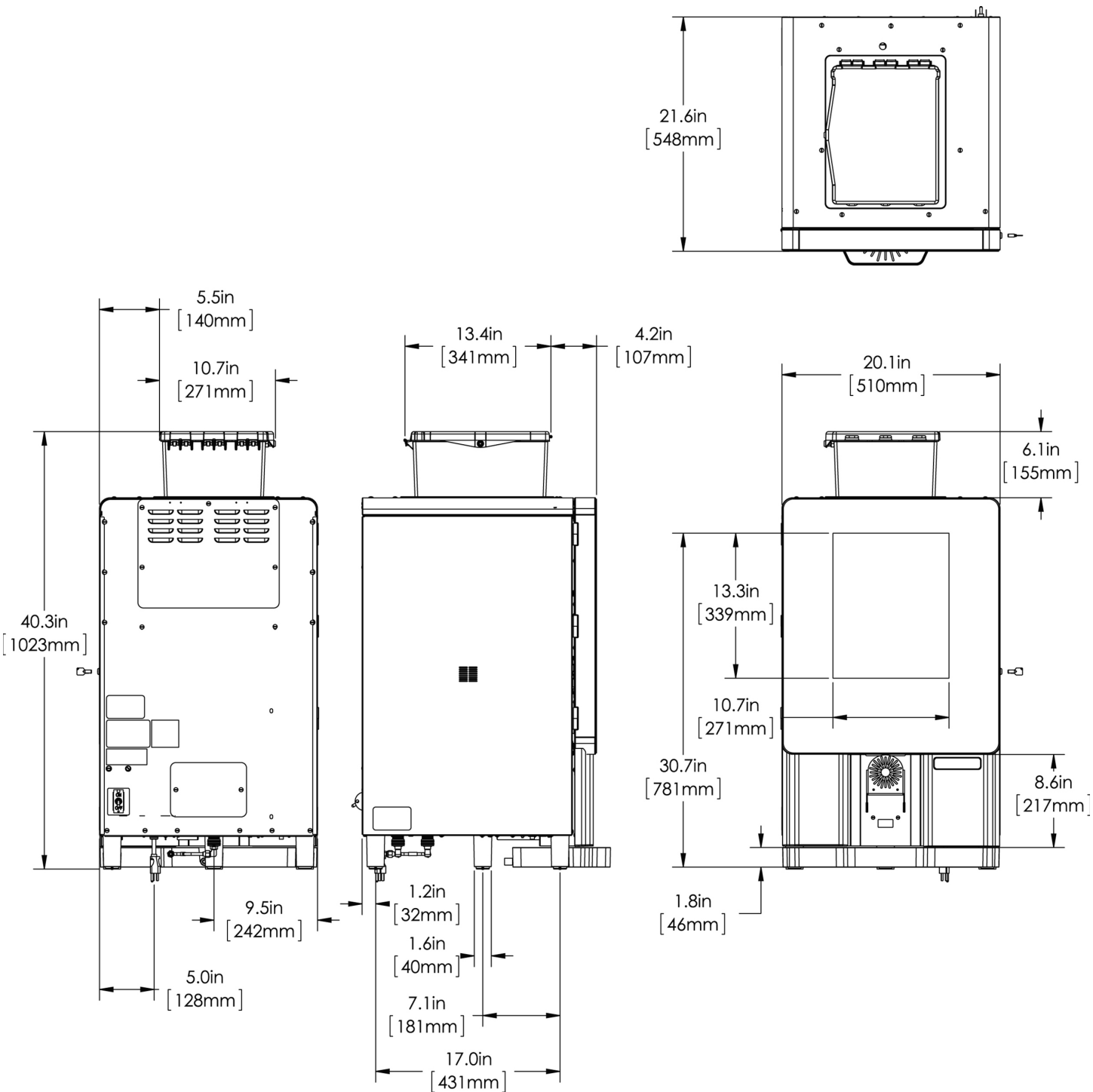
## CAD Drawings

2D	Revit	KLC
	●	●



BUNN® reserves the right to change specifications and product design without notice. Such revisions do not entitle the buyer to corresponding changes, improvements, additions or replacements for previously purchased equipment. For most current specifications and other info visit [bunn.com](http://bunn.com).

Last Updated:  
05/04/2021



	Unit			Shipping				
	Height	Width	Depth	Height	Width	Depth	Weight	Volume
English	40.3 in.	20.1 in.	23.8 in.	51.2 in.	24.4 in.	27.8 in.	170.000 lbs	20.037 ft³
Metric	102.4 cm	51.1 cm	60.5 cm	130.0 cm	61.9 cm	70.5 cm	77.112 kgs	0.567 m³



BUNN® reserves the right to change specifications and product design without notice. Such revisions do not entitle the buyer to corresponding changes, improvements, additions or replacements for previously purchased equipment. For most current specifications and other info visit [bunn.com](http://bunn.com).

Last Updated:  
05/04/2021

Related Products & Accessories: Sure Immersion 312 120/208-240V(44400.0240)



FILTER, PAPER 1 ROLL

Product #: 50766.0001



BUNN® reserves the right to change specifications and product design without notice. Such revisions do not entitle the buyer to corresponding changes, improvements, additions or replacements for previously purchased equipment. For most current specifications and other info visit [bunn.com](http://bunn.com).

Last Updated:  
05/04/2021

## Serving & Holding Options: Sure Immersion 312 120/208-240V(44400.0240)

\*Serving and Holding selections are currently unavailable. Please contact your sales representative to find out more information.\*



BUNN® reserves the right to change specifications and product design without notice. Such revisions do not entitle the buyer to corresponding changes, improvements, additions or replacements for previously purchased equipment. For most current specifications and other info visit [bunn.com](http://bunn.com).

Last Updated:  
05/04/2021