

DUAL® GPR DBC w/Lwr Fct & Fnl Lock

Height: 29.3" Width: 18.1" Depth: 25.4"
(74.4cm) (46.0cm) (64.5cm)



- Stores individual coffee recipes so operator can easily brew many varieties
 - Coffee extraction controlled with pre-infusion and pulse-brew, digital temperature control and large sprayhead; coffee strength controlled with variable by-pass
 - Operate any combination of BrewWISE equipment error-free with wireless brewer-grinder interface through the Smart Funnel
 - Programmable freshness indication; message on display alerts when freshness timer expires and when warmers will automatically shut off
 - Programmable warmer control; ability to program three time periods with distinct warmer output for each; default settings when this feature is activated is 1 hour at 100% power (100 watts) followed by 1 hour at 70% followed by 1 hour at 40%
 - Energy Saver Mode reduces tank temperature during idle periods
 - Each 1.5GPR portable server (included) has a Safety-Fresh® brew-through lid with vapor seal and spill protection
 - Brews 1/2, 1 or 1 1/2gal (1.9, 3.8 or 5.7L) batches
 - You can use the BrewWISE Recipe Writer (not included) to create coffee recipe cards from the convenience of your PC
 - SplashGard® funnels deflect hot liquids away from the hand
 - Energy saver mode reduces tank temperature during idle periods
 - Funnel locks help improve safety
 - PROP 65 Warning Decal included in packaging with equipment
- Agency: Servers not included unless otherwise noted



Specifications

Product #: 35900.0010

Funnel: Smart Funnel

Water Access: Plumbed

Faucet: Lower

Interface: Wireless

Finish: Stainless

Additional Features

BrewWISE

Electrical & Capacity

Volts*	Amps	Watts	Cord Attached	Plug Type	8oz cups/hr 236ml cups/hr	Input H ₂ O Temp.	Phase	# Wires plus Ground	Hertz
120/208-240	25.4-29	5158-6800	No	-	-	60°F (15.5°C)	1	3	60

*When a BUNN is machine rated 120/208-240V, 120/208V or 120/240V, the higher voltage is the supply voltage needed to power the machine. The 120V is there to supply power to some components rated 120V in the machine, but it is not the supply voltage and would not power the machine if the machine is marked with the before mentioned ratings.

Plumbing Requirements

PSI	kPa	Fitting Supplied	Water Flow Required (GPM)
20-90	138-621	3/8" Male Flare Fitting	-

CAD Drawings

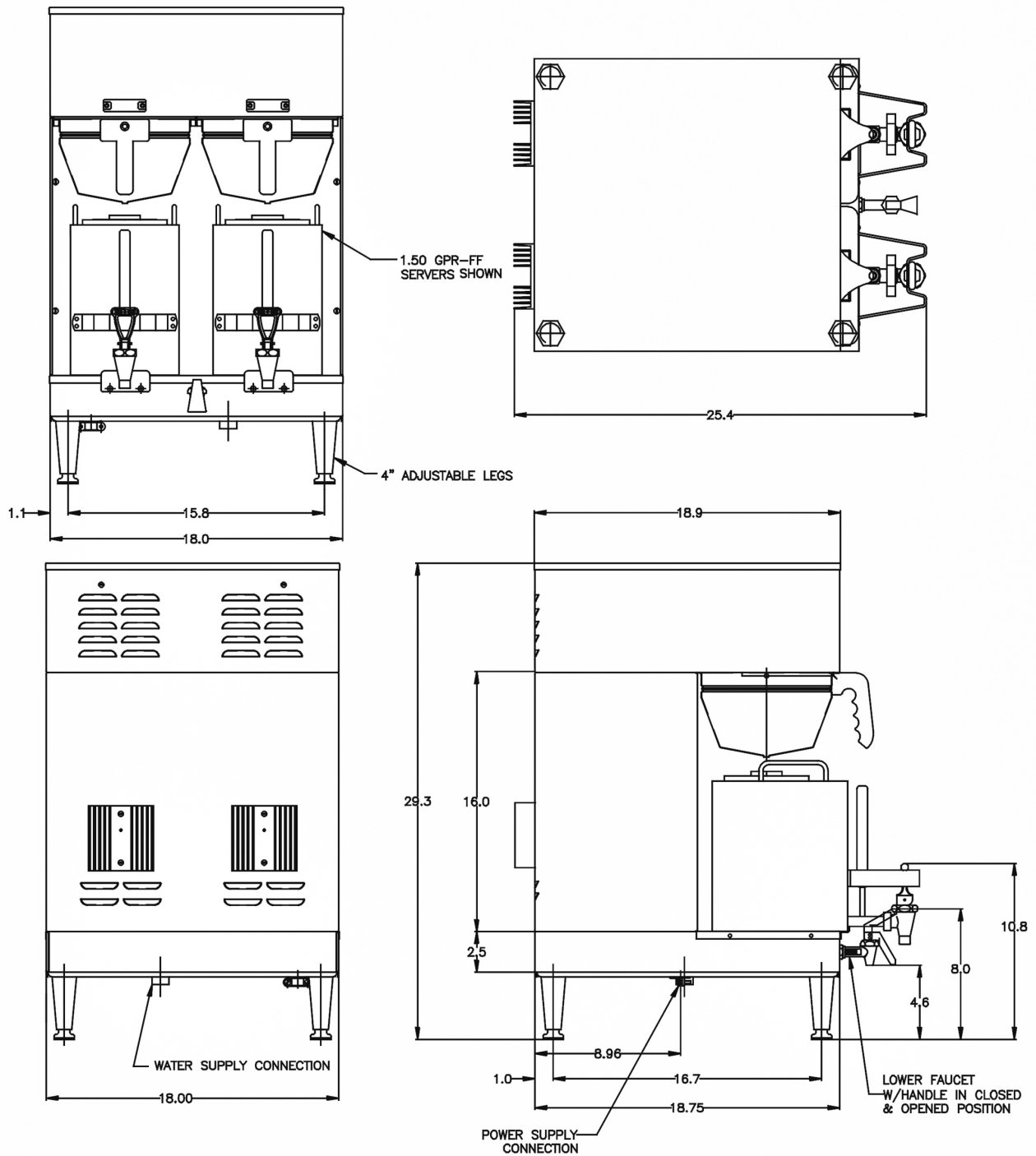
2D	Revit	KLC
●		

WARNING: This product can expose you to chemicals including Bisphenol A (BPA), which is known to the State of California to cause birth defects or other reproductive harm. For more information go to www.P65Warnings.ca.gov



BUNN® reserves the right to change specifications and product design without notice. Such revisions do not entitle the buyer to corresponding changes, improvements, additions or replacements for previously purchased equipment. For most current specifications and other info visit bunn.com.

Last Updated:
08/18/2025



	Unit			Shipping				
	Height	Width	Depth	Height	Width	Depth	Weight	Volume
English	29.3 in.	18.1 in.	25.4 in.	33.9 in.	21.4 in.	29.9 in.	96.550 lbs	12.518 ft ³
Metric	74.4 cm	46.0 cm	64.5 cm	86.0 cm	54.3 cm	75.9 cm	43.795 kgs	0.354 m ³



BUNN® reserves the right to change specifications and product design without notice. Such revisions do not entitle the buyer to corresponding changes, improvements, additions or replacements for previously purchased equipment. For most current specifications and other info visit bunn.com.

Last Updated:
08/18/2025

Related Products & Accessories: DUAL® GPR DBC w/Lwr Fct & Fnl Lock(35900.0010)



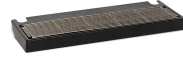
RWS1, 120V

Product #: 12203.0010¹



FILTERS, GOURMET 500
500/1 50/CL

Product #: 20138.1000



DRIP TRAY KIT, DUAL &
SH

Product #: 27150.0000



FUNNEL ASSY, W/
INSERTS SMTF

Product #: 32643.0000²



G9-2T DBC

Product #: 33700.0000

CARD ASSY, RECIPE
TRANSFER (BRW)

Product #: 34447.0016



SYSTEM, WQ-55(3).2L

Product #: 56000.0002¹



SYSTEM, WQ-55(3).2

Product #: 56000.0005¹



SYSTEM, WEQ-25(2).2

Product #: 56000.0028¹



SYSTEM, WEQ-35(3).2L

Product #: 56000.0034



CARTRIDGE, WQ-55
(3).2L

Product #: 56000.0102¹



CARTRIDGE, WQ-55(3).2

Product #: 56000.0105¹



CARTRIDGE, WEQ-25
(2).2

Product #: 56000.0124¹



CARTRIDGE, WEQ-35
(3).2L

Product #: 56000.0126¹

¹NSF Certified ²NSF Certified with spec sheet model listed ³NSF Certified under Solventum Purification ⁴NSF Certified under Mavea LLC ⁵NSF Certified under Zojirushi ⁶NSF Certified under Qins Inc ⁷NSF COMPONENT Certified



BUNN® reserves the right to change specifications and product design without notice. Such revisions do not entitle the buyer to corresponding changes, improvements, additions or replacements for previously purchased equipment. For most current specifications and other info visit bunn.com.

Last Updated:
08/18/2025

Serving & Holding Options: DUAL® GPR DBC w/Lwr Fct & Fnl Lock(35900.0010)



RWS1, 120V

Product #: 12203.0010¹



1.5GPR-FF, TOP HNDL

Product #: 20950.0004¹

¹NSF Certified ²NSF Certified with spec sheet model listed ³NSF Certified under Solventum Purification ⁴NSF Certified under Mavea LLC ⁵NSF Certified under Zojirushi ⁶NSF Certified under Qins Inc ⁷NSF COMPONENT Certified



BUNN® reserves the right to change specifications and product design without notice. Such revisions do not entitle the buyer to corresponding changes, improvements, additions or replacements for previously purchased equipment. For most current specifications and other info visit bunn.com.

Last Updated:
08/18/2025