

Sure Immersion 220 120V w/Printer Port

Height: 39.4" Width: 16.1" Depth: 19.8"
(100.1cm) (40.9cm) (50.3cm)



- Filter style coffee from a vacuum system with Air Infusion extraction control, resulting in a clean balanced cup with a smooth finish
- Two independent grinders with precision burrs for accurate grind profiles
- Beverage selections include Hot and Iced options
- Each recipe has programmable Air Infusion and Immersion Control for the ideal result in the cup
- Dispenses fresh coffee by the cup or by the carafe
- 5.75" to 8.25" cup clearance
- Two tinted 3lb hoppers allow customers to view fresh whole beans
- Beautiful 10" full color touchscreen with the ability to show promotional videos
- Large pictorial graphics provide an engaging drink selection
- Step-by-step pictures guide the operator through proper cleaning techniques for dependable performance
- Optional BUNNlink® remote monitoring support and over-the-phone diagnosis and repair is available
- Optional cashless reader from USA Technologies works with credit cards, debit cards, NFC and mobile wallets
- Printer not included. POS printer must operate on the RS-232C standard and have a 25-pin serial connector (dB-9 at machine)

Agency:



Specifications

Product #: 44400.0104

Legs: 4" Black Legs

Water Access: Plumbed

Finish: Stainless/Black

Door: Touchscreen

Additional Features

Hot Water Button

Electrical & Capacity

Volts*	Amps	Watts	Cord Attached	Plug Type	8oz cups/hr 236ml cups/hr	Input H ₂ O Temp.	Phase	# Wires plus Ground	Hertz
120	15.0	1800	Yes	NEMA 5-15P	63	60°F (15.5°C)	1	2	60

*When a BUNN is machine rated 120/208-240V, 120/208V or 120/240V, the higher voltage is the supply voltage needed to power the machine. The 120V is there to supply power to some components rated 120V in the machine, but it is not the supply voltage and would not power the machine if the machine is marked with the before mentioned ratings.

Plumbing Requirements

PSI	kPa	Fitting Supplied	Water Flow Required (GPM)
20-90	138-621	1/4" Male Flare Fitting	1.00

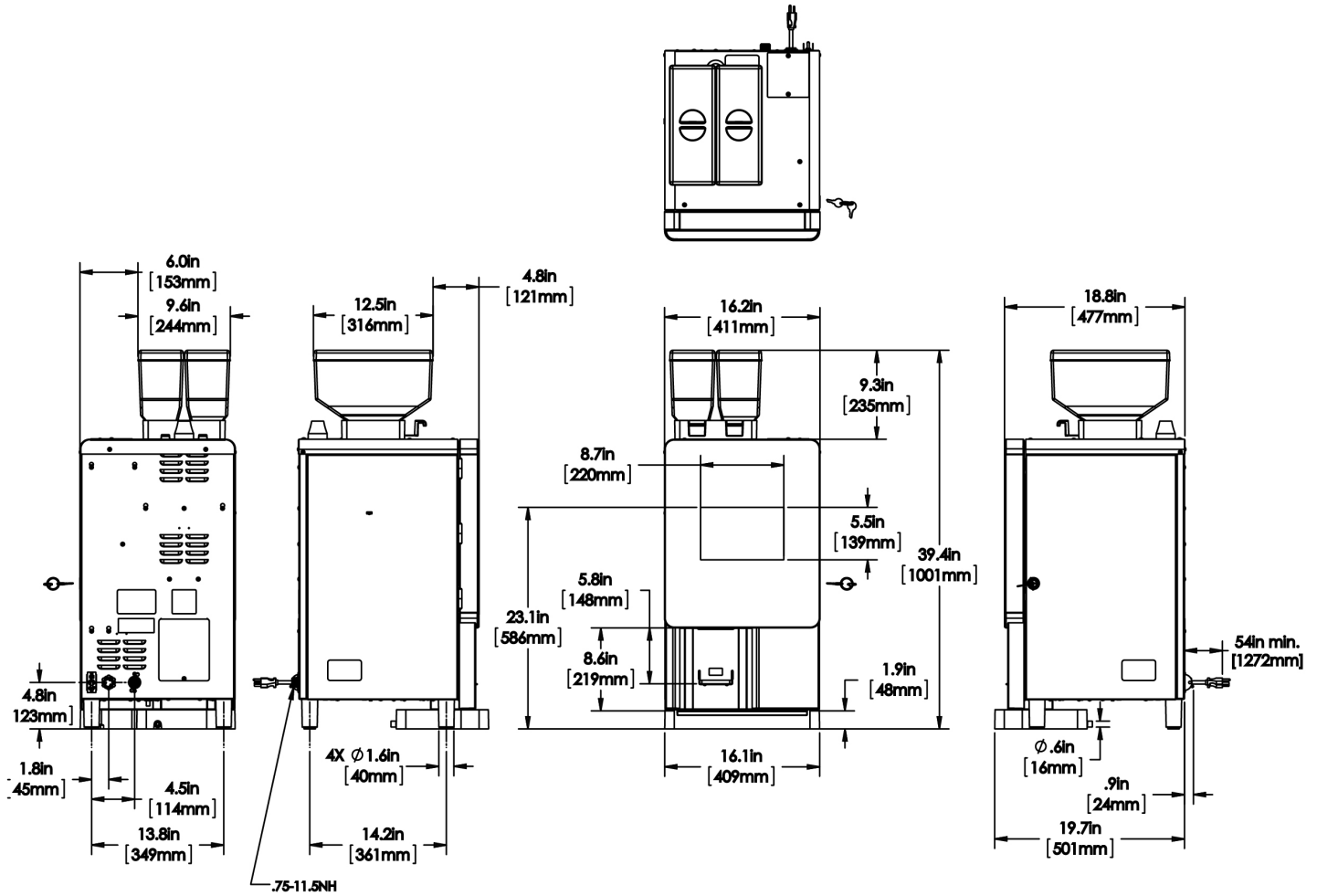
CAD Drawings

2D	Revit	KLC
●		



BUNN® reserves the right to change specifications and product design without notice. Such revisions do not entitle the buyer to corresponding changes, improvements, additions or replacements for previously purchased equipment. For most current specifications and other info visit bunn.com.

Last Updated:
05/03/2021



	Unit			Shipping				
	Height	Width	Depth	Height	Width	Depth	Weight	Volume
English	39.4 in.	16.1 in.	19.8 in.	46.0 in.	19.9 in.	25.3 in.	150.000 lbs	13.359 ft³
Metric	100.1 cm	40.9 cm	50.3 cm	116.8 cm	50.5 cm	64.1 cm	68.040 kgs	0.378 m³



BUNN® reserves the right to change specifications and product design without notice. Such revisions do not entitle the buyer to corresponding changes, improvements, additions or replacements for previously purchased equipment. For most current specifications and other info visit bunn.com.

Last Updated:
05/03/2021

Related Products & Accessories: Sure Immersion 220 120V w/Printer Port(44400.0104)



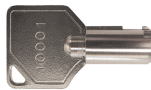
TABLET, CLEANING 1
JAR SURE IMMERSION

Product #: 42933.0001



FILTER, PAPER 1 ROLL

Product #: 50766.0001



KEY, PL518-101 SI 312

Product #: 52444.0020



BUNN® reserves the right to change specifications and product design without notice. Such revisions do not entitle the buyer to corresponding changes, improvements, additions or replacements for previously purchased equipment. For most current specifications and other info visit bunn.com.

Last Updated:
05/03/2021

Serving & Holding Options: Sure Immersion 220 120V w/Printer Port(44400.0104)

Serving and Holding selections are currently unavailable. Please contact your sales representative to find out more information.



BUNN® reserves the right to change specifications and product design without notice. Such revisions do not entitle the buyer to corresponding changes, improvements, additions or replacements for previously purchased equipment. For most current specifications and other info visit bunn.com.

Last Updated:
05/03/2021