

# JDF®-4S, 120V LIT PC W/ 4 SEG GFX

Height: 33.1" Width: 15.7" Depth: 27.5"  
(84.1cm) (39.9cm) (69.9cm)



- Patented High Intensity Mixing System delivers consistent quality beverages in the cup --- cup after cup, from the top of the cup to the bottom of the cup
- Four Segment Graphic Door makes graphics changes easy. Includes variety- pack of eight displays: Apple Juice; Cranberry Juice; Grape Juice; Lemonade; Orange Juice; Pineapple Juice; Prune Juice; Iced Tea
- LED lighted door graphics bring high visibility to front-of-house applications
- One dispenser delivers both frozen and ambient concentrate products, to maximize profitability by providing greater flexibility in product offerings
- 18lb (8.2 kg) ice bank provides superior cold drink capacity
- Portion Control dispense model: 3 dispense sizes can be set
- 7" (17.8cm) cup clearance accommodates most juice containers
- Quick dispense with 1.0 to 1.5oz (29.6 to 44.4ml) per second flow rate
- Door lock standard
- Service friendly design makes set up and maintenance simple
- Pumps and Mixes most 2+1 to 11+1 concentrates accurately and consistently, including 4+1 and 5+1 high viscosity concentrates

Agency:



## Specifications

**Product #:** 37300.0080

**Flavors:** 4 Flavors

**Water Access:** Plumbed

**Finish:** Black

**Door:** Lit

**Refrigerant:** R-134A

**Ice Bank:** 18.00 lbs (8.165 kgs)

**Dispense:** Push Button

## Additional Features

## Electrical & Capacity

Volts*	Amps	Watts	Cord Attached	Plug Type	8oz cups/hr 236ml cups/hr	Input H <sub>2</sub> O Temp.	Phase	# Wires plus Ground	Hertz
120	6	720	Yes	NEMA 5-15P	-	60°F (15.5°C)	1	2	60

\*When a BUNN is machine rated 120/208-240V, 120/208V or 120/240V, the higher voltage is the supply voltage needed to power the machine. The 120V is there to supply power to some components rated 120V in the machine, but it is not the supply voltage and would not power the machine if the machine is marked with the before mentioned ratings.

## Plumbing Requirements

PSI	kPa	Fitting Supplied	Water Flow Required (GPM)
20-100	138-689	3/8" Male Flare Fitting	-

**WARNING:**

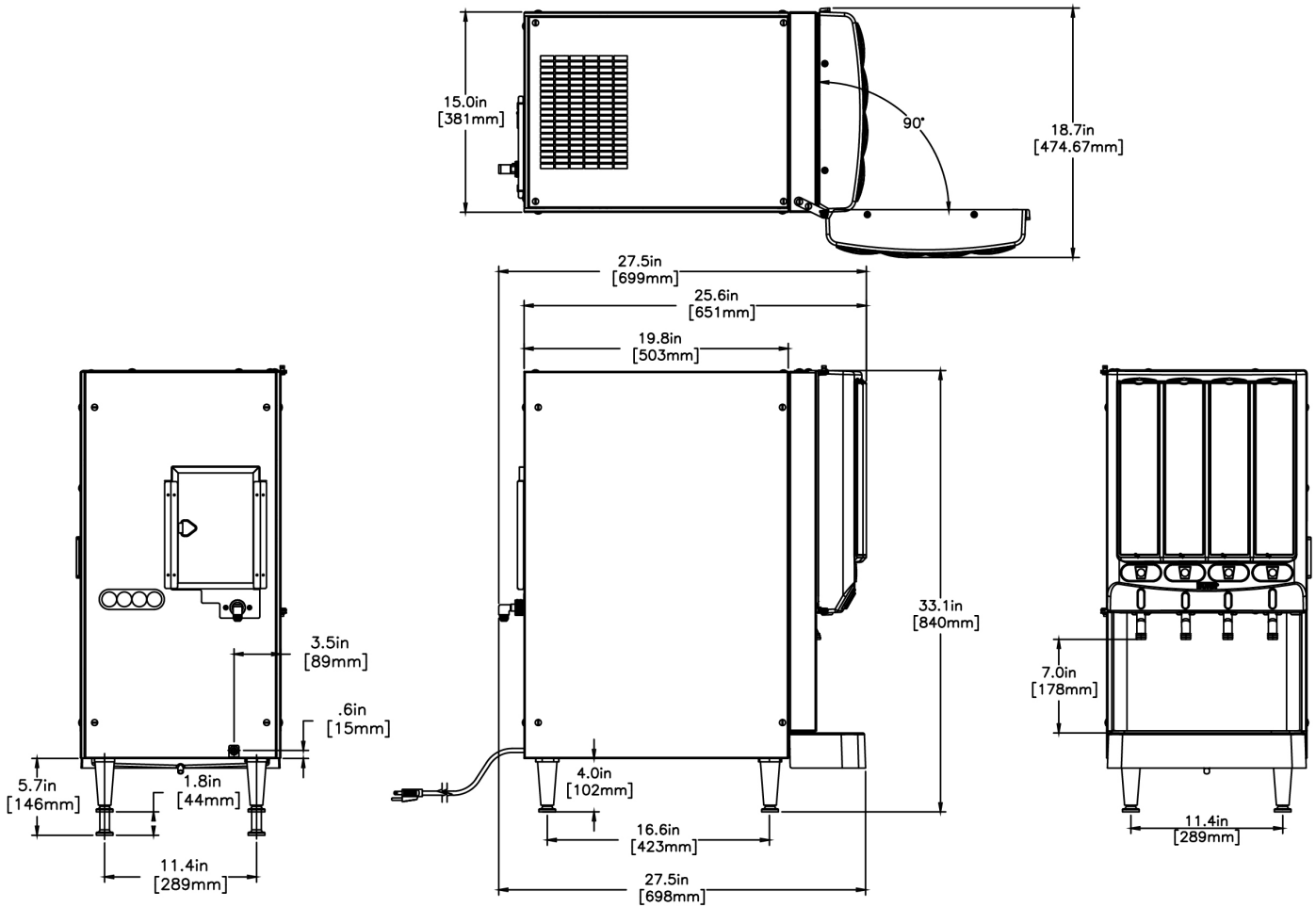
## CAD Drawings

2D	Revit	KLC
●		



BUNN® reserves the right to change specifications and product design without notice. Such revisions do not entitle the buyer to corresponding changes, improvements, additions or replacements for previously purchased equipment. For most current specifications and other info visit [bunn.com](http://bunn.com).

Last Updated:  
07/08/2025



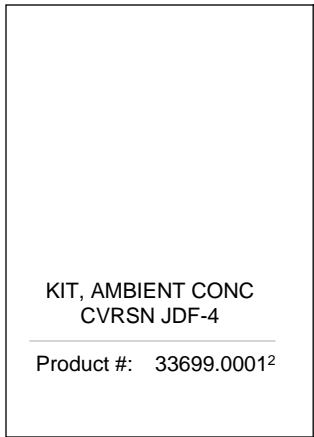


Unit			Shipping					
	Height	Width	Depth	Height	Width	Depth	Weight	Volume
English	33.1 in.	15.7 in.	27.5 in.	43.7 in.	22.8 in.	30.5 in.	144.000 lbs	17.543 ft <sup>3</sup>
Metric	84.1 cm	39.9 cm	69.9 cm	111.0 cm	57.8 cm	77.5 cm	65.318 kgs	0.497 m <sup>3</sup>




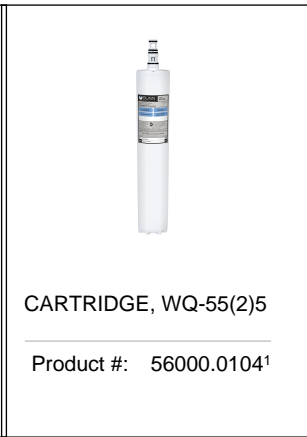



BUNN® reserves the right to change specifications and product design without notice. Such revisions do not entitle the buyer to corresponding changes, improvements, additions or replacements for previously purchased equipment. For most current specifications and other info visit [bunn.com](http://bunn.com).

Last Updated:  
07/08/2025

# Related Products & Accessories: JDF®-4S, 120V LIT PC W/ 4 SEG GFX(37300.0080)

 <p>KIT, AMBIENT CONC CVRSN JDF-4</p> <hr/> <p>Product #: 33699.0001<sup>2</sup></p>	 <p>CONTAINER ASSY, REFILLABLE</p> <hr/> <p>Product #: 39302.0000<sup>2</sup></p>	 <p>WIRE GRILL, DRIP TRAY (JDF-4S)</p> <hr/> <p>Product #: 39613.0000</p>	 <p>KIT, HOSE ASSY-PUMP JDF-2S/4S</p> <hr/> <p>Product #: 39690.0000<sup>2</sup></p>	 <p>TRAY, EXTENDED DRIP JDF-4S</p> <hr/> <p>Product #: 40789.1000</p>
--	--	--	--	--

 <p>KIT, SWITCH COVER-4 VLV PUSH &amp; HOLD ONLY</p> <hr/> <p>Product #: 45541.1000</p>	 <p>SYSTEM, WQ-55(2)5</p> <hr/> <p>Product #: 56000.0004<sup>1</sup></p>	 <p>SYSTEM, WEQ-10(1.5)5</p> <hr/> <p>Product #: 56000.0027<sup>1</sup></p>	 <p>CARTRIDGE, WQ-55(2)5</p> <hr/> <p>Product #: 56000.0104<sup>1</sup></p>	 <p>CARTRIDGE, WEQ-10 (1.5)5</p> <hr/> <p>Product #: 56000.0122<sup>1</sup></p>
--	--	---	--	---

<sup>1</sup>NSF Certified <sup>2</sup>NSF Certified with spec sheet model listed <sup>3</sup>NSF Certified under Solventum Purification <sup>4</sup>NSF Certified under Mavea LLC <sup>5</sup>NSF Certified under Zojirushi <sup>6</sup>NSF Certified under Qins Inc <sup>7</sup>NSF COMPONENT Certified



BUNN® reserves the right to change specifications and product design without notice. Such revisions do not entitle the buyer to corresponding changes, improvements, additions or replacements for previously purchased equipment. For most current specifications and other info visit [bunn.com](http://bunn.com).

Last Updated:  
07/08/2025

# Serving & Holding Options: JDF®-4S, 120V LIT PC W/ 4 SEG GFX(37300.0080)

\*Serving and Holding selections are currently unavailable. Please contact your sales representative to find out more information.\*

---

<sup>1</sup>NSF Certified <sup>2</sup>NSF Certified with spec sheet model listed <sup>3</sup>NSF Certified under Solventum Purification <sup>4</sup>NSF Certified under Mavea LLC <sup>5</sup>NSF Certified under Zojirushi <sup>6</sup>NSF Certified under Qins Inc <sup>7</sup>NSF COMPONENT Certified



BUNN® reserves the right to change specifications and product design without notice. Such revisions do not entitle the buyer to corresponding changes, improvements, additions or replacements for previously purchased equipment. For most current specifications and other info visit [bunn.com](http://bunn.com).

Last Updated:  
07/08/2025