

FMD DBC-3 BLK

Height: 29.8" Width: 11.7" Depth: 22.7"
(75.7cm) (29.7cm) (57.7cm)



- Each mixing chamber has independent powder to water ratio
- Easy-to-program, one-touch portion control for 3 cup sizes
- Simple setup and hopper throw calibration system
- System setup is password protected for safety
- Adjustable legs and drip tray accommodate 20oz (.59L) mugs easily
- Electrical and plumbing components easily accessible through front and top
- High speed heavy-duty whipper for complete product mixing
- Improved automatic rinsing of whipper reduces run-on after beverage is dispensed
- Large easy-to-fill translucent hoppers hold 4lb (1.81kg) of product each, ensuring quick and timely refilling
- Lighted front graphics for merchandising are easy to exchange: cappuccino or soup
- Variable speed motors allow control of product consistency in mixing chamber (.75 to 6.6 grams of powder per second)

Agency:



Specifications

Product #: 29250.0000

Finish: Black

Hoppers: Three

Door: Lit

Door: Side Hinge

Dispense: Portion Control

Water Access: Plumbed

Additional Features

DBC

Electrical & Capacity

| Volts* | Amps | Watts | Cord Attached | Plug Type | 8oz cups/hr 236ml cups/hr | Input H ² O Temp. | Phase | # Wires plus Ground | Hertz |
|--------|------|-------|---------------|-----------|------------------------------|---------------------------------|-------|------------------------|-------|
| 120 | 15 | 1800 | - | - | 83 | 60°F (15.5°C) | 1 | 2 | 60 |

*When a BUNN is machine rated 120/208-240V, 120/208V or 120/240V, the higher voltage is the supply voltage needed to power the machine. The 120V is there to supply power to some components rated 120V in the machine, but it is not the supply voltage and would not power the machine if the machine is marked with the before mentioned ratings.

Plumbing Requirements

| PSI | kPa | Fitting Supplied | Water Flow Required (GPM) |
|-------|---------|-------------------------|---------------------------|
| 20-90 | 138-621 | 1/4" Male Flare Fitting | - |

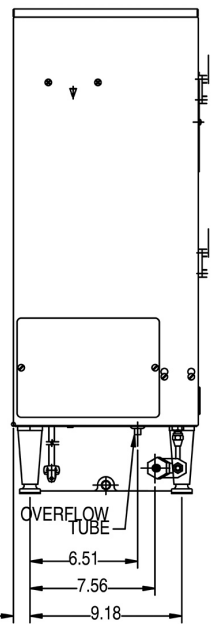
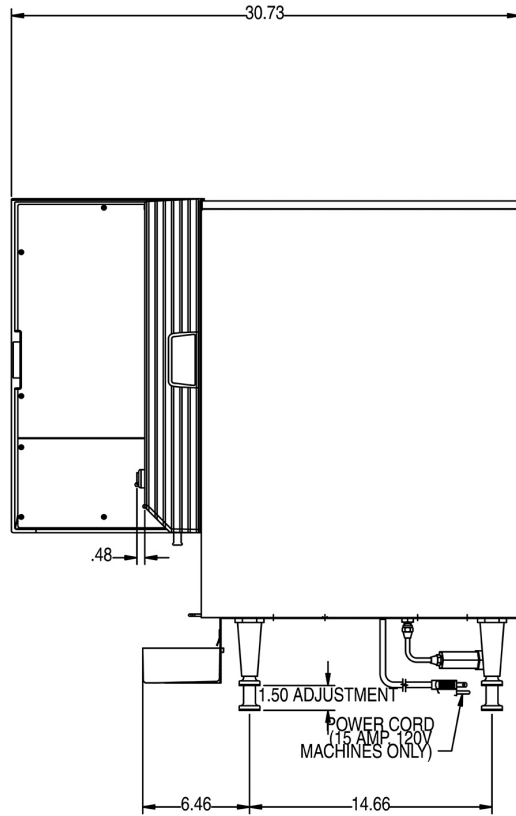
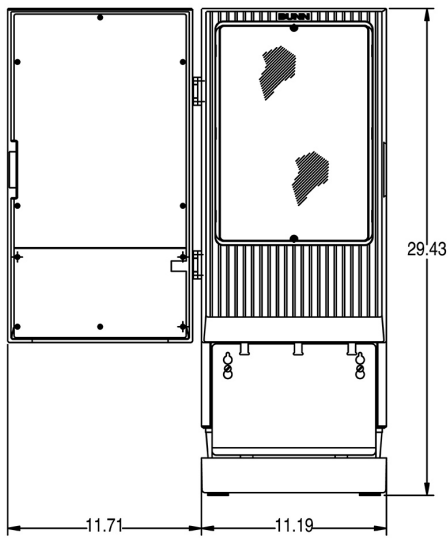
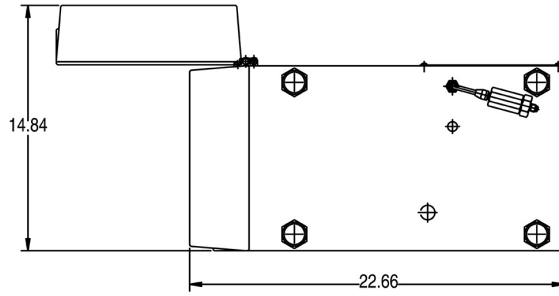
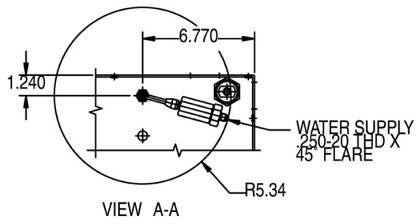
CAD Drawings

| 2D | Revit | KLC |
|----|-------|-----|
| ● | | |



BUNN® reserves the right to change specifications and product design without notice. Such revisions do not entitle the buyer to corresponding changes, improvements, additions or replacements for previously purchased equipment. For most current specifications and other info visit bunn.com.

Last Updated:
08/28/2020



| | Unit | | | Shipping | | | | |
|---------|----------|----------|----------|----------|----------|----------|------------|-----------------------|
| | Height | Width | Depth | Height | Width | Depth | Weight | Volume |
| English | 29.8 in. | 11.7 in. | 22.7 in. | 35.8 in. | 16.1 in. | 26.8 in. | 85.000 lbs | 8.924 ft ³ |
| Metric | 75.7 cm | 29.7 cm | 57.7 cm | 90.8 cm | 41.0 cm | 67.9 cm | 38.556 kgs | 0.253 m ³ |



BUNN® reserves the right to change specifications and product design without notice. Such revisions do not entitle the buyer to corresponding changes, improvements, additions or replacements for previously purchased equipment. For most current specifications and other info visit bunn.com.

Last Updated:
08/28/2020

Related Products & Accessories:FMD DBC-3 BLK(29250.0000)

Related Products selections are currently unavailable. Please contact your sales representative to find out more information.



BUNN® reserves the right to change specifications and product design without notice. Such revisions do not entitle the buyer to corresponding changes, improvements, additions or replacements for previously purchased equipment. For most current specifications and other info visit bunn.com.

Last Updated:
08/28/2020

Serving & Holding Options: FMD DBC-3 BLK(29250.0000)

Serving and Holding selections are currently unavailable. Please contact your sales representative to find out more information.



BUNN® reserves the right to change specifications and product design without notice. Such revisions do not entitle the buyer to corresponding changes, improvements, additions or replacements for previously purchased equipment. For most current specifications and other info visit bunn.com.

Last Updated:
08/28/2020