

# SINGLE SH

Height: 35.8" Width: 9.3" Depth: 22.2"  
(90.9cm) (23.6cm) (56.4cm)



- Brews 1/2, 1 or 1 1/2gal (1.9, 3.8 or 5.7L) batches
- Brews 5.1 to 11.4gal (19.3 to 43.2L) of perfect coffee per hour
- Electronic grinder interface communicates to grinder on exact amount of coffee for selected brew batch size
- Patented server heat control automatically shuts off once target temperature is reached (Can be set to 175°-190°F (79.4°-87.8°C))
- Remote 1 or 2 server docking stations for additional satellite coffee serving
- Safety-Fresh® patented brew-through lid with vapor seal and spill prevention
- Variable batch selector knob lets you brew large batches or small servings
- Brews 1/2, 1 or 1 1/2gal (1.9, 3.8 or 5.7L) batches
- Servers not included unless otherwise noted

Server(s) sold separately

Agency:

## Specifications

**Product #:** 27800.6002

**Water Access:** Plumbed

**Interface:** Cabled

**Finish:** Stainless

**Funnel:** Stainless Steel

**Faucet:** Upper

**Legs:** 4" Black Legs

## Additional Features

BrewWISE

## Electrical & Capacity

Volts*	Amps	Watts	Cord Attached	Plug Type	8oz cups/hr 236ml cups/hr	Input H <sub>2</sub> O Temp.	Phase	# Wires plus Ground	Hertz
-	-	-	-	-	182	60°F (15.5°C)	-	-	-

\*When a BUNN is machine rated 120/208-240V, 120/208V or 120/240V, the higher voltage is the supply voltage needed to power the machine. The 120V is there to supply power to some components rated 120V in the machine, but it is not the supply voltage and would not power the machine if the machine is marked with the before mentioned ratings.

## Plumbing Requirements

PSI	kPa	Fitting Supplied	Water Flow Required (GPM)
20-90	138-621	1/4" Male Flare Fitting	-

## CAD Drawings

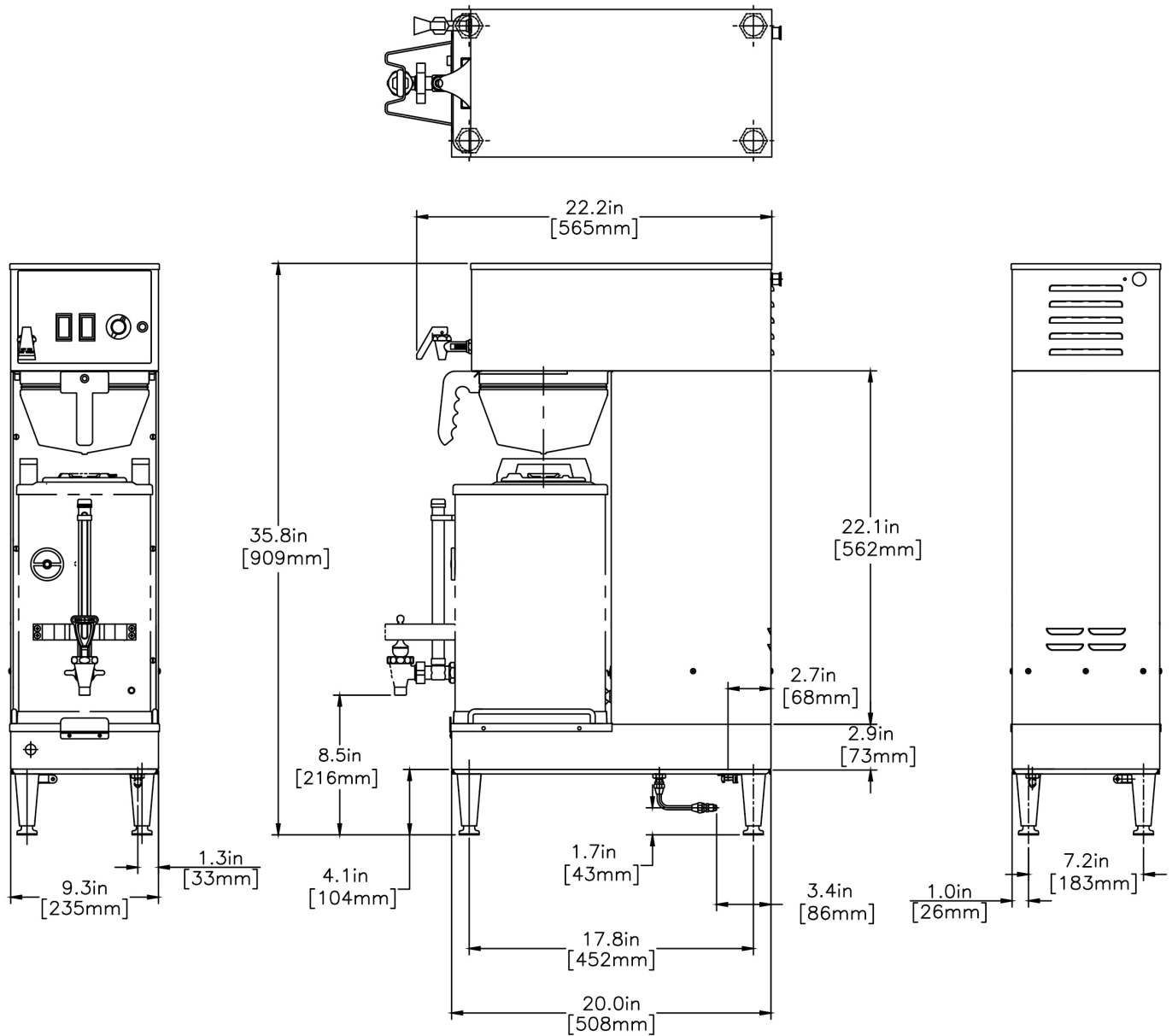
2D	Revit	KLC
●		

**WARNING:**



BUNN® reserves the right to change specifications and product design without notice. Such revisions do not entitle the buyer to corresponding changes, improvements, additions or replacements for previously purchased equipment. For most current specifications and other info visit [bunn.com](http://bunn.com).

Last Updated:  
07/08/2025



Unit				Shipping				
	Height	Width	Depth	Height	Width	Depth	Weight	Volume
English	35.8 in.	9.3 in.	22.2 in.	39.8 in.	12.8 in.	27.1 in.	-	7.995 ft <sup>3</sup>
Metric	90.9 cm	23.6 cm	56.4 cm	101.0 cm	32.5 cm	68.9 cm	-	0.226 m <sup>3</sup>



BUNN® reserves the right to change specifications and product design without notice. Such revisions do not entitle the buyer to corresponding changes, improvements, additions or replacements for previously purchased equipment. For most current specifications and other info visit [bunn.com](http://bunn.com).

Last Updated:  
07/08/2025

# Related Products & Accessories: SINGLE SH(27800.6002)



FILTERS, GOURMET 500  
500/1 50/CL

Product #: 20138.1000



FUNNEL ASSY, SST  
(DUAL/SGL)

Product #: 20201.1201<sup>2</sup>



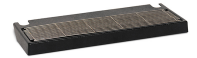
DRIP TRAY

Product #: 20213.0200



DRIP TRAY KIT, SINGLE  
STD & SH

Product #: 26830.0000



DRIP TRAY KIT, DUAL &  
SH

Product #: 27150.0000



1SH STAND, 120V

Product #: 27825.0000<sup>7</sup>



1SH STAND, 120V BLK

Product #: 27825.0003<sup>7</sup>



STAND, 1SH

Product #: 27825.6000<sup>7</sup>



2SH STAND, 120V

Product #: 27875.0000<sup>7</sup>



2SH STAND, 120V BLK

Product #: 27875.0003<sup>7</sup>

CARD ASSY, RECIPE  
TRANSFER (BRW)

Product #: 34447.0016



POUCHPACK FUNL  
ASSY, COFFEE BL

Product #: 35282.0000<sup>2</sup>



SYSTEM, WQ-55(3).2L

Product #: 56000.0002<sup>1</sup>



SYSTEM, WQ-55(2)5

Product #: 56000.0004<sup>1</sup>



SYSTEM, WQ-55(3).2

Product #: 56000.0005<sup>1</sup>





<sup>1</sup>NSF Certified <sup>2</sup>NSF Certified with spec sheet model listed <sup>3</sup>NSF Certified under Solventum Purification <sup>4</sup>NSF Certified under Mavea LLC <sup>5</sup>NSF Certified under Zojirushi <sup>6</sup>NSF Certified under Qins Inc <sup>7</sup>NSF COMPONENT Certified







BUNN® reserves the right to change specifications and product design without notice. Such revisions do not entitle the buyer to corresponding changes, improvements, additions or replacements for previously purchased equipment. For most current specifications and other info visit [bunn.com](http://bunn.com).

Last Updated:  
07/08/2025

# Related Products & Accessories: SINGLE SH(27800.6002)

 <p>SYSTEM, WEQ-10(1.5)5</p> <hr/> <p>Product #: 56000.0027<sup>1</sup></p>	 <p>SYSTEM, WEQ-25(2).2</p> <hr/> <p>Product #: 56000.0028<sup>1</sup></p>	 <p>SYSTEM, WEQ-35(3).2L</p> <hr/> <p>Product #: 56000.0034</p>	 <p>CARTRIDGE, WQ-55 (3).2L</p> <hr/> <p>Product #: 56000.0102<sup>1</sup></p>	 <p>CARTRIDGE, WQ-55(2)5</p> <hr/> <p>Product #: 56000.0104<sup>1</sup></p>
--	---	--	---	--

 <p>CARTRIDGE, WQ-55(3).2</p> <hr/> <p>Product #: 56000.0105<sup>1</sup></p>	 <p>CARTRIDGE, WEQ-10 (1.5)5</p> <hr/> <p>Product #: 56000.0122<sup>1</sup></p>	 <p>CARTRIDGE, WEQ-25 (2).2</p> <hr/> <p>Product #: 56000.0124<sup>1</sup></p>	 <p>CARTRIDGE, WEQ-35 (3).2L</p> <hr/> <p>Product #: 56000.0126<sup>1</sup></p>
---	--	---	--



BUNN® reserves the right to change specifications and product design without notice. Such revisions do not entitle the buyer to corresponding changes, improvements, additions or replacements for previously purchased equipment. For most current specifications and other info visit [bunn.com](http://bunn.com).

Last Updated:  
07/08/2025

# Serving & Holding Options: SINGLE SH(27800.6002)



SH SERVER, 1.5G/5.7L  
NO FL ADJ TMR

Product #: 27850.0001<sup>1</sup>



SH SERVER, 1.5G/5.7L  
BLK NO FL ADJ TMR

Product #: 27850.0004<sup>1</sup>



SH SERVER, 1.5G/5.7L  
45 MIN ADJ TMR

Product #: 27850.0006<sup>1</sup>



SH SERVER, 1.5G BLK  
60 MIN ADJ TMR

Product #: 27850.0008<sup>1</sup>



SH SERVER, 1.5G 120  
MIN ADJ TMR AUTO OFF

Product #: 27850.0009<sup>1</sup>



SH SERVER, 1.5G/5.7L  
240 MIN ADJ TMR

Product #: 27850.0016<sup>1</sup>



SH SERVER, 1.5G/5.7L  
BLK 120 MIN ADJ TM

Product #: 27850.0022<sup>1</sup>



SH-S SERVER 1G 60  
MIN ADJ TMR

Product #: 27850.0046<sup>1</sup>



SOFT HEAT  
SERVER, 1.5G(SH)

Product #: 27850.6001<sup>1</sup>



BUNN® reserves the right to change specifications and product design without notice. Such revisions do not entitle the buyer to corresponding changes, improvements, additions or replacements for previously purchased equipment. For most current specifications and other info visit [bunn.com](http://bunn.com).

Last Updated:  
07/08/2025