

Single® GPR

Height: 29.3" (74.4cm) Width: 9.3" (23.6cm) Depth: 19.0" (48.3cm)

- Each 1.5GPR portable server (included) has a Safety-Fresh® brew-through lid with vapor seal and spill protection
- Adjustable bypass ensures perfect coffee regardless of batch size
- Brews 1/2, 1 or 1 1/2gal (1.9, 3.8 or 5.7L) batches



Agency:

Specifications

Product #: 23050.6003

Funnel: Stainless Steel

Water Access: Plumbed

Faucet: Upper

Interface: Cabled

Finish: Stainless

Additional Features

BrewWISE

Electrical & Capacity

Volts*	Amps	Watts	Cord Attached	Plug Type	8oz cups/hr 236ml cups/hr	Input H ² O Temp.	Phase	# Wires plus Ground	Hertz
-	-	-	-	-	182	60°F (15.5°C)	-	-	-

*When a BUNN is machine rated 120/208-240V, 120/208V or 120/240V, the higher voltage is the supply voltage needed to power the machine. The 120V is there to supply power to some components rated 120V in the machine, but it is not the supply voltage and would not power the machine if the machine is marked with the before mentioned ratings.

Plumbing Requirements

PSI	kPa	Fitting Supplied	Water Flow Required (GPM)
20-90	138-621	1/4" Male Flare Fitting	-

CAD Drawings

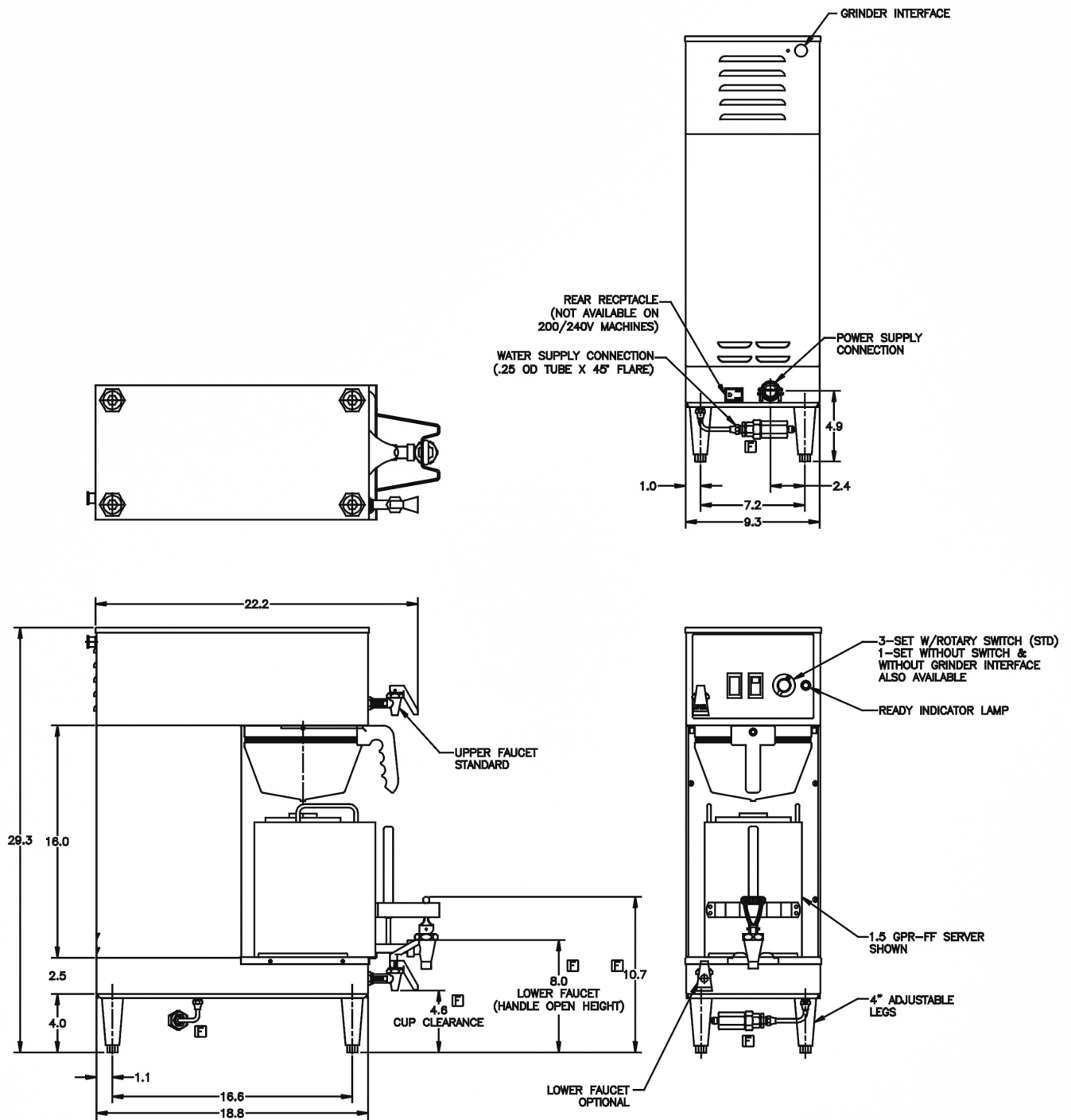
2D	Revit	KLC
●		

WARNING:



BUNN® reserves the right to change specifications and product design without notice. Such revisions do not entitle the buyer to corresponding changes, improvements, additions or replacements for previously purchased equipment. For most current specifications and other info visit bunn.com.

Last Updated:
07/08/2025



Unit			Shipping					
	Height	Width	Depth	Height	Width	Depth	Weight	Volume
English	29.3 in.	9.3 in.	19.0 in.	-	-	-	-	-
Metric	74.4 cm	23.6 cm	48.3 cm	-	-	-	-	-



BUNN® reserves the right to change specifications and product design without notice. Such revisions do not entitle the buyer to corresponding changes, improvements, additions or replacements for previously purchased equipment. For most current specifications and other info visit bunn.com.

Last Updated:
07/08/2025

Related Products & Accessories: Single® GPR(23050.6003)



RWS1, 120V

Product #: 12203.0010¹



STOVE,RWS1
120V/100W W/EXT LEGS

Product #: 12203.6001¹



FILTERS, GOURMET 500
500/1 50/CL

Product #: 20138.1000



FUNNEL ASSY, SST
(DUAL/SGL)

Product #: 20201.1201²



DRIP TRAY KIT,SINGLE
STD & SH

Product #: 26830.0000



1SH STAND, 120V

Product #: 27825.0000⁷



1SH STAND,120V BLK

Product #: 27825.0003⁷



POUCHPACK FUNL
ASSY,COFFEE BL

Product #: 35282.0000²



WATER FILTER,
EQHP-10L

Product #: 39000.0001³



WATER FILTER,
EQHP-10

Product #: 39000.0004³



SYSTEM, WQ-55(2)5L

Product #: 56000.0001¹



SYSTEM, WQ-55(2)5

Product #: 56000.0004¹



SYSTEM, WEQ-10(1.5)5L

Product #: 56000.0024¹



SYSTEM, WEQ-10(1.5)5

Product #: 56000.0027¹



CARTRIDGE, WQ-55(2)5L

Product #: 56000.0101¹

¹NSF Certified ²NSF Certified with spec sheet model listed ³NSF Certified under Solventum Purification ⁴NSF Certified under Mavea LLC ⁵NSF Certified under Zojirushi ⁶NSF Certified under Qins Inc ⁷NSF COMPONENT Certified



BUNN® reserves the right to change specifications and product design without notice. Such revisions do not entitle the buyer to corresponding changes, improvements, additions or replacements for previously purchased equipment. For most current specifications and other info visit bunn.com.

Last Updated:
07/08/2025

Related Products & Accessories: Single® GPR(23050.6003)



CARTRIDGE, WQ-55(2)5

Product #: 56000.0104¹



CARTRIDGE, WEQ-10
(1.5)5L

Product #: 56000.0121¹



CARTRIDGE, WEQ-10
(1.5)5

Product #: 56000.0122¹



BUNN® reserves the right to change specifications and product design without notice. Such revisions do not entitle the buyer to corresponding changes, improvements, additions or replacements for previously purchased equipment. For most current specifications and other info visit bunn.com.

Last Updated:
07/08/2025

Serving & Holding Options: Single® GPR(23050.6003)



RESERVOIR,GPR1.5
FST/FCT TOP HANDLES

Product #: 20950.6001¹



BUNN® reserves the right to change specifications and product design without notice. Such revisions do not entitle the buyer to corresponding changes, improvements, additions or replacements for previously purchased equipment. For most current specifications and other info visit bunn.com.

Last Updated:
07/08/2025